



ELECTRONIC COPY

LG801626294
Report verification at igi.org



May 21, 2026

IGI Report Number **LG801626294**

Description **LABORATORY GROWN DIAMOND**

Shape and Cutting Style **PEAR BRILLIANT**

Measurements **19.12 X 11.84 X 7.30 MM**

GRADING RESULTS

Carat Weight **10.38 CARATS**

Color Grade **FANCY VIVID PINK**

Clarity Grade **VVS 2**

May 21, 2026
IGI Report Number **LG801626294**
Description **LABORATORY GROWN DIAMOND**
Shape and Cutting Style **PEAR BRILLIANT**
Measurements **19.12 X 11.84 X 7.30 MM**

GRADING RESULTS

Carat Weight **10.38 CARATS**

Color Grade **FANCY VIVID PINK**

Clarity Grade **VVS 2**

ADDITIONAL GRADING INFORMATION

Polish **EXCELLENT**

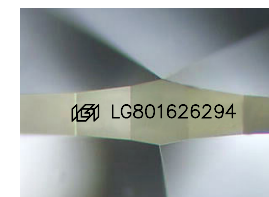
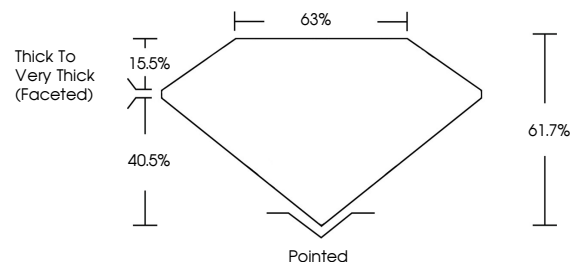
Symmetry **EXCELLENT**

Fluorescence **STRONG**

Inscription(s) **IGI LG801626294**

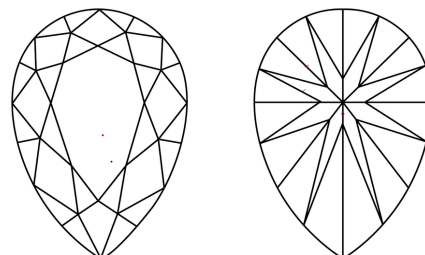
Comments: This Laboratory Grown Diamond was created by Chemical Vapor Deposition (CVD) growth process.
Indications of post-growth treatment.

PROPORTIONS



Sample Image Used

CLARITY CHARACTERISTICS



KEY TO SYMBOLS

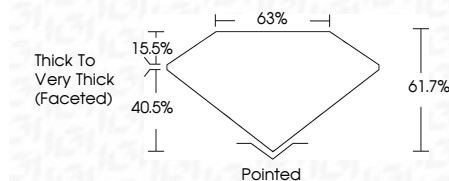
Red symbols indicate internal characteristics.
Green symbols indicate external characteristics.

COLOR

D E F G H I J Faint Very Light Light

CLARITY

FL	IF	VS ¹⁻²	VS ¹⁻²	SI ¹⁻²	I ¹⁻³
Flawless	Internally Flawless	Very Very Slightly Included	Very Slightly Included	Slightly Included	Included



ADDITIONAL GRADING INFORMATION

Polish **EXCELLENT**

Symmetry **EXCELLENT**

Fluorescence **STRONG**

Inscription(s) **IGI LG801626294**

Comments: This Laboratory Grown Diamond was created by Chemical Vapor Deposition (CVD) growth process.
Indications of post-growth treatment.



IGI



May 21, 2026
IGI Report No LG801626294
PEAR BRILLIANT
10.38 CARATS
Carat Weight
Color Grade FANCY VIVID PINK
Clarity Grade VVS 2
Depth 61.7%
Table 63%
Girdle Thick to Very Thick (Faceted)
Culet Pointed
Polish EXCELLENT
Symmetry EXCELLENT
Fluorescence STRONG
Inscription(s) IGI LG801626294
Comments: This Laboratory Grown Diamond was created by Chemical Vapor Deposition (CVD) growth process.
Indications of post-growth treatment.