



LABORATORY GROWN DIAMOND REPORT

May 16, 2026
 IGI Report Number **LG801625592**
 Description **LABORATORY GROWN DIAMOND**
 Shape and Cutting Style **MODIFIED MARQUISE STEP CUT**
 Measurements **12.98 X 4.52 X 2.38 MM**

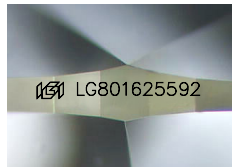
GRADING RESULTS

Carat Weight **0.89 CARAT**
 Color Grade **E**
 Clarity Grade **VVS 2**

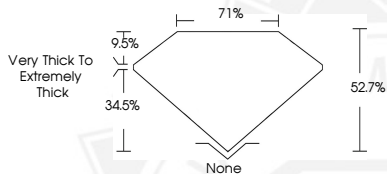
ADDITIONAL GRADING INFORMATION

Polish **EXCELLENT**
 Symmetry **EXCELLENT**
 Fluorescence **NONE**
 Inscription(s) **IGI LG801625592**

Comments: This Laboratory Grown Diamond was created by
 Chemical Vapor Deposition (CVD) growth process.
 Type IIa



Sample Image Used



May 16, 2026

IGI Report Number LG801625592
MODIFIED MARQUISE STEP CUT
LABORATORY GROWN DIAMOND
12.98 X 4.52 X 2.38 MM
 Carat Weight **0.89 CARAT**
 Color Grade **E**
 Clarity Grade **VVS 2**
 Polish **EXCELLENT**
 Symmetry **EXCELLENT**
 Fluorescence **NONE**
 Inscription(s) **IGI LG801625592**

Comments: This Laboratory Grown
 Diamond was created by
 Chemical Vapor Deposition (CVD)
 growth process. Type IIa



May 16, 2026

IGI Report Number LG801625592
MODIFIED MARQUISE STEP CUT
LABORATORY GROWN DIAMOND
12.98 X 4.52 X 2.38 MM
 Carat Weight **0.89 CARAT**
 Color Grade **E**
 Clarity Grade **VVS 2**
 Polish **EXCELLENT**
 Symmetry **EXCELLENT**
 Fluorescence **NONE**
 Inscription(s) **IGI LG801625592**

Comments: This Laboratory Grown
 Diamond was created by
 Chemical Vapor Deposition (CVD)
 growth process. Type IIa



THIS DOCUMENT WAS PRODUCED WITH THE FOLLOWING SECURITY MEASURES: SPECIAL DOCUMENT PAPER, INK SCREENS, WATERMARK, BACKGROUND DESIGNS, HOLOGRAM AND OTHER SECURITY FEATURES NOT LISTED AND DO EXCEED DOCUMENT SECURITY INDUSTRY GUIDELINES.