



**ELECTRONIC COPY**

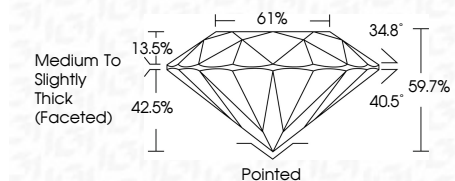
LG801624452  
Report verification at igi.org



May 14, 2026  
IGI Report Number **LG801624452**  
Description **LABORATORY GROWN DIAMOND**  
Shape and Cutting Style **ROUND BRILLIANT**  
Measurements **6.51 - 6.54 X 3.90 MM**

**GRADING RESULTS**

Carat Weight **1.03 CARAT**  
Color Grade **F**  
Clarity Grade **VVS 1**  
Cut Grade **EXCELLENT**

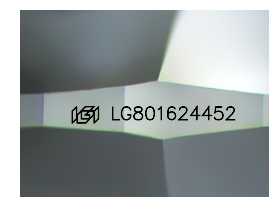


**ADDITIONAL GRADING INFORMATION**

Polish **EXCELLENT**  
Symmetry **EXCELLENT**  
Fluorescence **NONE**  
Inscription(s) **IGI LG801624452**  
Comments: This Laboratory Grown Diamond was created by Chemical Vapor Deposition (CVD) growth process. Type IIa

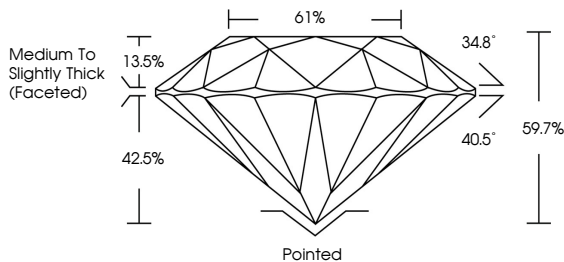


May 14, 2026  
IGI Report No LG801624452  
**ROUND BRILLIANT**  
6.51 - 6.54 X 3.90 MM  
Carat Weight **1.03 CARAT**  
Color Grade **F**  
Clarity Grade **VVS 1**  
Cut Grade **EXCELLENT**  
Depth **61%**  
Table **34.8°**  
Crown Angle **40.5°**  
Pavilion Angle **59.7%**  
Total Depth **42.5%**  
Crown Height **13.5%**  
Girdle **Medium To Slightly Thick (Faceted)**  
Culet **Pointed**  
Polish **EXCELLENT**  
Symmetry **EXCELLENT**  
Fluorescence **NONE**  
Inscription(s) **IGI LG801624452**  
Comments: This Laboratory Grown Diamond was created by Chemical Vapor Deposition (CVD) growth process. Type IIa

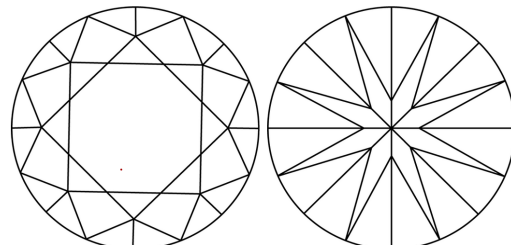


Sample Image Used

**PROPORTIONS**



**CLARITY CHARACTERISTICS**



**KEY TO SYMBOLS**

Red symbols indicate internal characteristics.  
Green symbols indicate external characteristics.

**COLOR**

D	E	F	G	H	I	J	Faint	Very Light	Light
---	---	---	---	---	---	---	-------	------------	-------

**CLARITY**

FL	IF	VVS <sup>1-2</sup>	VS <sup>1-2</sup>	SI <sup>1-2</sup>	I <sup>1-3</sup>
Flawless	Internally Flawless	Very Very Slightly Included	Very Slightly Included	Slightly Included	Included

