



ELECTRONIC COPY

LG801621232
Report verification at igi.org



May 14, 2026

IGI Report Number **LG801621232**

Description **LABORATORY GROWN DIAMOND**

Shape and Cutting Style **OLD EUROPEAN CUT**

Measurements **7.84 - 7.86 X 4.94 MM**

GRADING RESULTS

Carat Weight **2.05 CARATS**

Color Grade **E**

Clarity Grade **VVS 2**

May 14, 2026
IGI Report Number **LG801621232**
Description **LABORATORY GROWN DIAMOND**
Shape and Cutting Style **OLD EUROPEAN CUT**
Measurements **7.84 - 7.86 X 4.94 MM**

GRADING RESULTS

Carat Weight **2.05 CARATS**

Color Grade **E**

Clarity Grade **VVS 2**

ADDITIONAL GRADING INFORMATION

Polish **EXCELLENT**

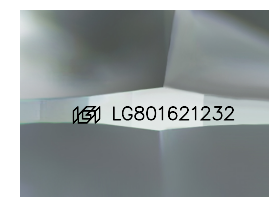
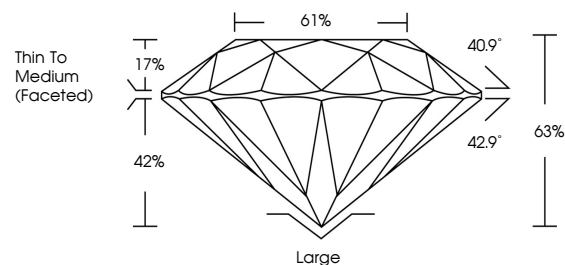
Symmetry **EXCELLENT**

Fluorescence **NONE**

Inscription(s) **IGI LG801621232**

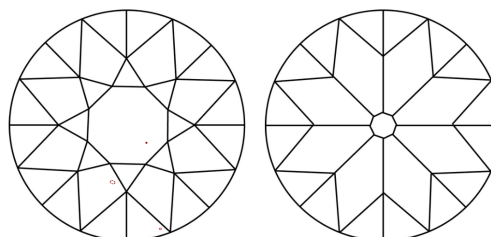
Comments: This Laboratory Grown Diamond was created by Chemical Vapor Deposition (CVD) growth process.
Type IIa

PROPORTIONS



Sample Image Used

CLARITY CHARACTERISTICS



KEY TO SYMBOLS

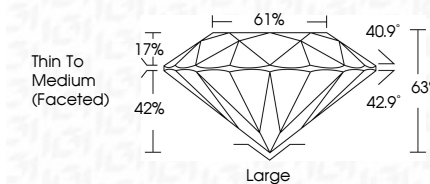
Red symbols indicate internal characteristics.
Green symbols indicate external characteristics.

COLOR

D E F G H I J Faint Very Light Light

CLARITY

FL	IF	VVS ¹⁻²	VS ¹⁻²	SI ¹⁻²	I ¹⁻³
Flawless	Internally Flawless	Very Very Slightly Included	Very Slightly Included	Slightly Included	Included



ADDITIONAL GRADING INFORMATION

Polish **EXCELLENT**

Symmetry **EXCELLENT**

Fluorescence **NONE**

Inscription(s) **IGI LG801621232**

Comments: This Laboratory Grown Diamond was created by Chemical Vapor Deposition (CVD) growth process.
Type IIa



IGI



May 14, 2026
IGI Report No LG801621232
OLD EUROPEAN CUT
7.84 - 7.86 X 4.94 MM
2.05 CARATS
E
VVS 2
63%
61%
Thin To Medium (Faceted)
Large
EXCELLENT
EXCELLENT
NONE
IGI LG801621232
Comments: This Laboratory Grown Diamond was created by Chemical Vapor Deposition (CVD) growth process.
Type IIa