



**ELECTRONIC COPY**

LG801619863  
Report verification at igi.org



May 27, 2026

IGI Report Number **LG801619863**

Description **LABORATORY GROWN DIAMOND**

Shape and Cutting Style **EMERALD CUT**

Measurements **6.90 X 4.66 X 3.37 MM**

**GRADING RESULTS**

Carat Weight **1.13 CARAT**

Color Grade **FANCY YELLOW**

Clarity Grade **VVS 2**

May 27, 2026  
IGI Report Number **LG801619863**  
Description **LABORATORY GROWN DIAMOND**  
Shape and Cutting Style **EMERALD CUT**  
Measurements **6.90 X 4.66 X 3.37 MM**

**GRADING RESULTS**

Carat Weight **1.13 CARAT**

Color Grade **FANCY YELLOW**

Clarity Grade **VVS 2**

**ADDITIONAL GRADING INFORMATION**

Polish **EXCELLENT**

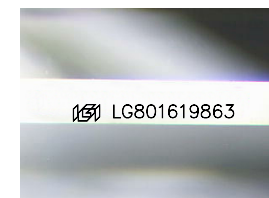
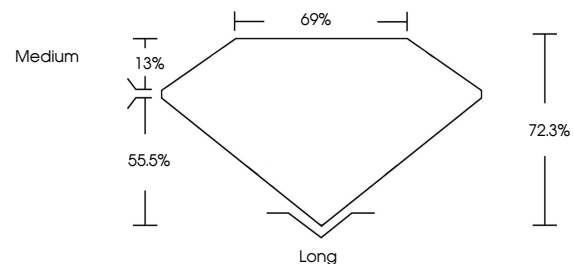
Symmetry **EXCELLENT**

Fluorescence **NONE**

Inscription(s) **IGI LG801619863**

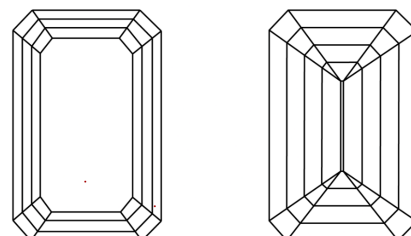
Comments: This Laboratory Grown Diamond was created by Chemical Vapor Deposition (CVD) growth process.

**PROPORTIONS**



Sample Image Used

**CLARITY CHARACTERISTICS**



**KEY TO SYMBOLS**

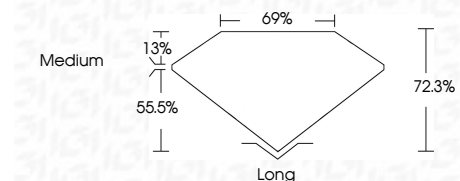
Red symbols indicate internal characteristics.  
Green symbols indicate external characteristics.

**COLOR**

D E F G H I J Faint Very Light Light

**CLARITY**

FL	IF	VVS <sup>1-2</sup>	VS <sup>1-2</sup>	SI <sup>1-2</sup>	I <sup>1-3</sup>
Flawless	Internally Flawless	Very Very Slightly Included	Very Slightly Included	Slightly Included	Included



**ADDITIONAL GRADING INFORMATION**

Polish **EXCELLENT**

Symmetry **EXCELLENT**

Fluorescence **NONE**

Inscription(s) **IGI LG801619863**

Comments: This Laboratory Grown Diamond was created by Chemical Vapor Deposition (CVD) growth process.



**IGI**



May 27, 2026  
IGI Report No LG801619863  
**EMERALD CUT**

1.13 CARAT  
FANCY YELLOW

6.90 X 4.66 X 3.37 MM

Color Grade **VVS 2**  
Depth **72.3%**  
Table **13%**  
Girdle **Medium**

Long **EXCELLENT**  
Polish **EXCELLENT**  
Symmetry **EXCELLENT**  
Fluorescence **NONE**  
Inscription(s) **IGI LG801619863**

Comments: This Laboratory Grown Diamond was created by Chemical Vapor Deposition (CVD) growth process.