



ELECTRONIC COPY

LG801616759 Report verification at igi.org



May 17, 2026
IGI Report Number LG801616759
Description LABORATORY GROWN DIAMOND
Shape and Cutting Style CUSHION MODIFIED BRILLIANT
Measurements 8.15 X 6.22 X 4.16 MM
GRADING RESULTS
Carat Weight 1.57 CARAT
Color Grade E
Clarity Grade VVS 2

LABORATORY GROWN DIAMOND REPORT

May 17, 2026
IGI Report Number LG801616759
Description LABORATORY GROWN DIAMOND
Shape and Cutting Style CUSHION MODIFIED BRILLIANT
Measurements 8.15 X 6.22 X 4.16 MM

GRADING RESULTS

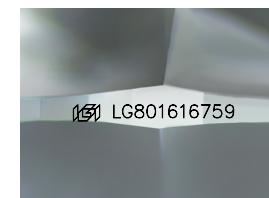
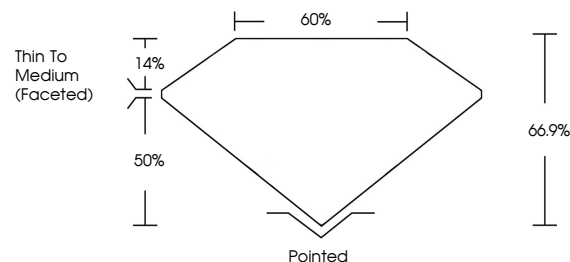
Carat Weight 1.57 CARAT
Color Grade E
Clarity Grade VVS 2

ADDITIONAL GRADING INFORMATION

Polish EXCELLENT
Symmetry EXCELLENT
Fluorescence NONE
Inscription(s) LG801616759

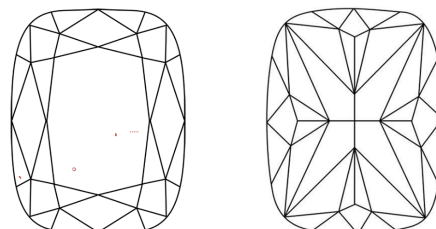
Comments: This Laboratory Grown Diamond was created by Chemical Vapor Deposition (CVD) growth process. Type IIa

PROPORTIONS



Sample Image Used

CLARITY CHARACTERISTICS



KEY TO SYMBOLS

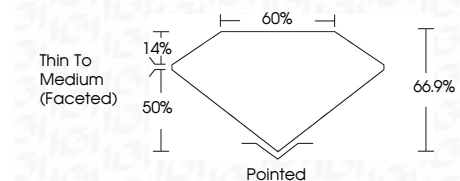
Red symbols indicate internal characteristics.
Green symbols indicate external characteristics.

COLOR

D E F G H I J Faint Very Light Light

CLARITY

FL IF VVS 1-2 VS 1-2 SI 1-2 I 1-3
Flawless Internally Flawless Very Very Slightly Included Very Slightly Included Slightly Included Included



ADDITIONAL GRADING INFORMATION

Polish EXCELLENT
Symmetry EXCELLENT
Fluorescence NONE
Inscription(s) LG801616759
Comments: This Laboratory Grown Diamond was created by Chemical Vapor Deposition (CVD) growth process. Type IIa



May 17, 2026
IGI Report No LG801616759
CUSHION MODIFIED BRILLIANT
8.15 X 6.22 X 4.16 MM
1.57 CARAT E
VVS 2
66.9%
60%
Thin To Medium (Faceted)
Pointed
EXCELLENT
EXCELLENT
NONE
LG801616759
Comments: This Laboratory Grown Diamond was created by Chemical Vapor Deposition (CVD) growth process. Type IIa