



ELECTRONIC COPY

LG801615400
Report verification at igi.org



May 19, 2026

IGI Report Number **LG801615400**

Description **LABORATORY GROWN DIAMOND**

Shape and Cutting Style **PRINCESS CUT**

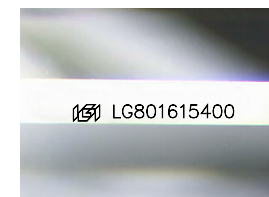
Measurements **9.23 X 9.11 X 6.60 MM**

GRADING RESULTS

Carat Weight **4.77 CARATS**

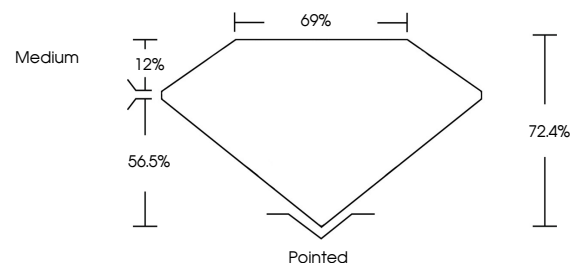
Color Grade **F**

Clarity Grade **VVS 2**

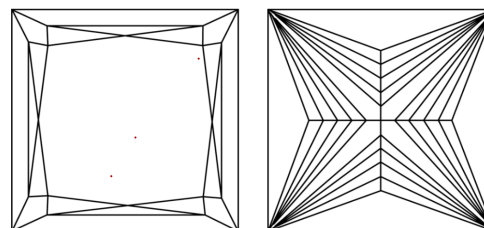


Sample Image Used

PROPORTIONS



CLARITY CHARACTERISTICS



KEY TO SYMBOLS

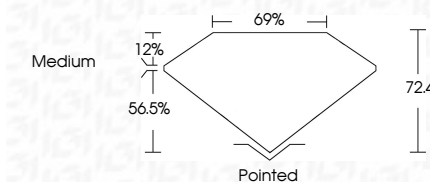
Red symbols indicate internal characteristics.
Green symbols indicate external characteristics.

COLOR

D E F G H I J Faint Very Light Light

CLARITY

FL	IF	VVS ¹⁻²	VS ¹⁻²	SI ¹⁻²	I ¹⁻³
Flawless	Internally Flawless	Very Very Slightly Included	Very Slightly Included	Slightly Included	Included



ADDITIONAL GRADING INFORMATION

Polish **EXCELLENT**

Symmetry **EXCELLENT**

Fluorescence **NONE**

Inscription(s) **IGI LG801615400**

Comments: This Laboratory Grown Diamond was created by Chemical Vapor Deposition (CVD) growth process. Type IIa



IGI



May 19, 2026
IGI Report No LG801615400
PRINCESS CUT
9.23 X 9.11 X 6.60 MM
4.77 CARATS
F
VVS 2
72.4%
69%
Medium
Pointed
EXCELLENT
EXCELLENT
NONE
IGI LG801615400
Comments: This Laboratory Grown Diamond was created by Chemical Vapor Deposition (CVD) growth process. Type IIa