



**ELECTRONIC COPY**

LG801606495  
Report verification at igi.org



May 15, 2026

IGI Report Number **LG801606495**

Description **LABORATORY GROWN DIAMOND**

Shape and Cutting Style **OVAL MODIFIED BRILLIANT**

Measurements **9.91 X 7.12 X 4.68 MM**

**GRADING RESULTS**

Carat Weight **2.52 CARATS**

Color Grade **D**

Clarity Grade **VVS 2**

May 15, 2026  
IGI Report Number **LG801606495**  
Description **LABORATORY GROWN DIAMOND**  
Shape and Cutting Style **OVAL MODIFIED BRILLIANT**  
Measurements **9.91 X 7.12 X 4.68 MM**

**GRADING RESULTS**

Carat Weight **2.52 CARATS**

Color Grade **D**

Clarity Grade **VVS 2**

**ADDITIONAL GRADING INFORMATION**

Polish **EXCELLENT**

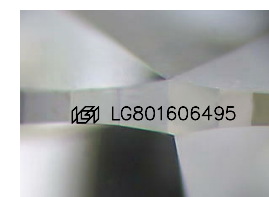
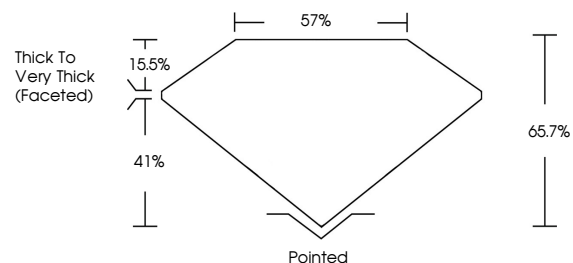
Symmetry **EXCELLENT**

Fluorescence **NONE**

Inscription(s) **IGI LG801606495**

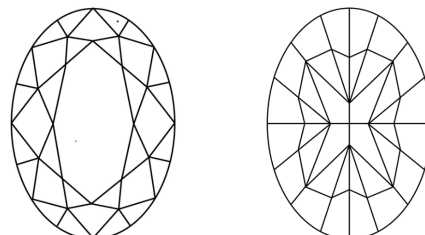
Comments: This Laboratory Grown Diamond was created by Chemical Vapor Deposition (CVD) growth process.  
Type IIa

**PROPORTIONS**



Sample Image Used

**CLARITY CHARACTERISTICS**



**KEY TO SYMBOLS**

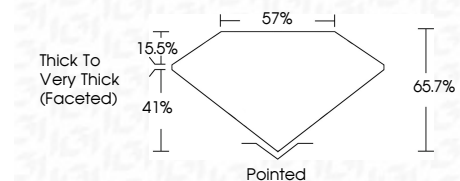
Red symbols indicate internal characteristics.  
Green symbols indicate external characteristics.

**COLOR**

D E F G H I J Faint Very Light Light

**CLARITY**

FL	IF	VVS <sup>1-2</sup>	VS <sup>1-2</sup>	SI <sup>1-2</sup>	I <sup>1-3</sup>
Flawless	Internally Flawless	Very Very Slightly Included	Very Slightly Included	Slightly Included	Included



**ADDITIONAL GRADING INFORMATION**

Polish **EXCELLENT**

Symmetry **EXCELLENT**

Fluorescence **NONE**

Inscription(s) **IGI LG801606495**

Comments: This Laboratory Grown Diamond was created by Chemical Vapor Deposition (CVD) growth process.  
Type IIa



May 15, 2026  
IGI Report No LG801606495  
**OVAL MODIFIED BRILLIANT**  
9.91 X 7.12 X 4.68 MM  
2.52 CARATS  
D  
VVS 2  
65.7%  
41%  
57%  
Thick to Very Thick (Faceted)  
Pointed  
EXCELLENT  
EXCELLENT  
NONE  
IGI LG801606495

Comments: This Laboratory Grown Diamond was created by Chemical Vapor Deposition (CVD) growth process.  
Type IIa