



June 10, 2026

IGI Report Number **LG800685495**

ROUND BRILLIANT

LABORATORY GROWN DIAMOND

5.45 - 5.49 X 3.38 MM

Carat Weight **0.62 CARAT**

Color Grade **D**

Clarity Grade **FLAWLESS**

Cut Grade **IDEAL**

Polish **EXCELLENT**

Symmetry **EXCELLENT**

Fluorescence **NONE**

Inscription(s) **IGI LG800685495**

Comments: HEARTS & ARROWS As Grown - No indication of post-growth treatment. This Laboratory Grown Diamond was created by High Pressure High Temperature (HPHT) growth process. Type II

LABORATORY GROWN DIAMOND REPORT

June 10, 2026

IGI Report Number **LG800685495**

Description **LABORATORY GROWN DIAMOND**

Shape and Cutting Style **ROUND BRILLIANT**

Measurements **5.45 - 5.49 X 3.38 MM**

GRADING RESULTS

Carat Weight **0.62 CARAT**

Color Grade **D**

Clarity Grade **FLAWLESS**

Cut Grade **IDEAL**

ADDITIONAL GRADING INFORMATION

Polish **EXCELLENT**

Symmetry **EXCELLENT**

Fluorescence **NONE**

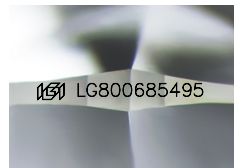
Inscription(s) **IGI LG800685495**

Comments: HEARTS & ARROWS

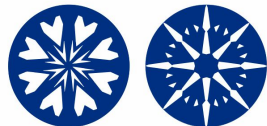
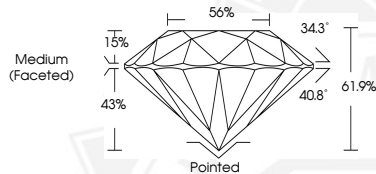
As Grown - No indication of post-growth treatment.

This Laboratory Grown Diamond was created by High Pressure High Temperature (HPHT) growth process.

Type II



Sample Image Used



HEARTS & ARROWS



June 10, 2026

IGI Report Number **LG800685495**

ROUND BRILLIANT

LABORATORY GROWN DIAMOND

5.45 - 5.49 X 3.38 MM

Carat Weight **0.62 CARAT**

Color Grade **D**

Clarity Grade **FLAWLESS**

Cut Grade **IDEAL**

Polish **EXCELLENT**

Symmetry **EXCELLENT**

Fluorescence **NONE**

Inscription(s) **IGI LG800685495**

Comments: HEARTS & ARROWS As Grown - No indication of post-growth treatment. This Laboratory Grown Diamond was created by High Pressure High Temperature (HPHT) growth process. Type II



THIS DOCUMENT WAS PRODUCED WITH THE FOLLOWING SECURITY MEASURES: SPECIAL DOCUMENT PAPER, INK SCREENS, WATERMARK, BACKGROUND DESIGNS, HOLOGRAM AND OTHER SECURITY FEATURES NOT LISTED AND DO EXCEED DOCUMENT SECURITY INDUSTRY GUIDELINES.