



ELECTRONIC COPY

LG800684727
Report verification at igi.org



June 1, 2026

IGI Report Number **LG800684727**

Description **LABORATORY GROWN DIAMOND**

Shape and Cutting Style **PRINCESS CUT**

Measurements **7.02 X 7.00 X 5.08 MM**

GRADING RESULTS

Carat Weight **2.24 CARATS**

Color Grade **D**

Clarity Grade **VVS 2**

June 1, 2026
IGI Report Number **LG800684727**
Description **LABORATORY GROWN DIAMOND**
Shape and Cutting Style **PRINCESS CUT**
Measurements **7.02 X 7.00 X 5.08 MM**

GRADING RESULTS

Carat Weight **2.24 CARATS**

Color Grade **D**

Clarity Grade **VVS 2**

ADDITIONAL GRADING INFORMATION

Polish **EXCELLENT**

Symmetry **EXCELLENT**

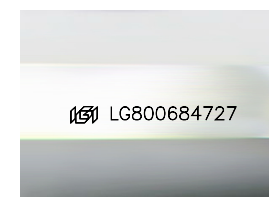
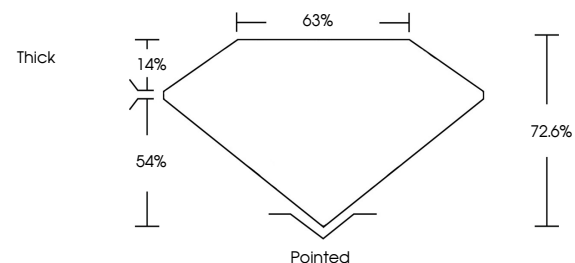
Fluorescence **NONE**

Inscription(s) **IGI LG800684727**

Comments: As Grown - No indication of post-growth treatment.

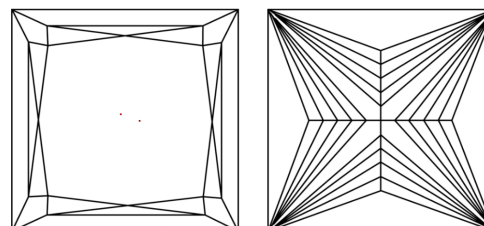
This Laboratory Grown Diamond was created by High Pressure High Temperature (HPHT) growth process. Type II

PROPORTIONS



Sample Image Used

CLARITY CHARACTERISTICS



KEY TO SYMBOLS

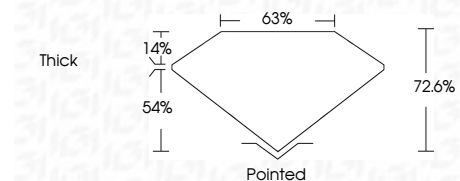
Red symbols indicate internal characteristics.
Green symbols indicate external characteristics.

COLOR

D E F G H I J Faint Very Light Light

CLARITY

FL	IF	VVS ¹⁻²	VS ¹⁻²	SI ¹⁻²	I ¹⁻³
Flawless	Internally Flawless	Very Very Slightly Included	Very Slightly Included	Slightly Included	Included



ADDITIONAL GRADING INFORMATION

Polish **EXCELLENT**

Symmetry **EXCELLENT**

Fluorescence **NONE**

Inscription(s) **IGI LG800684727**

Comments: As Grown - No indication of post-growth treatment.

This Laboratory Grown Diamond was created by High Pressure High Temperature (HPHT) growth process. Type II



IGI



June 1, 2026
IGI Report No LG800684727
PRINCESS CUT

2.24 CARATS
D

7.02 X 7.00 X 5.08 MM
VVS 2
72.6%
63%
Thick

Pointed
EXCELLENT
EXCELLENT
NONE
IGI LG800684727

Comments: As Grown - No indication of post-growth treatment. This Laboratory Grown Diamond was created by High Pressure High Temperature (HPHT) growth process. Type II