



**INTERNATIONAL
GEMOLOGICAL
INSTITUTE**

ELECTRONIC COPY

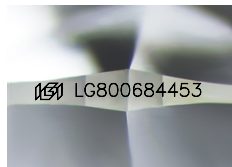


June 1, 2026

IGI Report Number LG800684453
ROUND BRILLIANT
LABORATORY GROWN DIAMOND
5.15 - 5.17 X 3.12 MM

LABORATORY GROWN DIAMOND REPORT

June 1, 2026
IGI Report Number **LG800684453**
Description **LABORATORY GROWN DIAMOND**
Shape and Cutting Style **ROUND BRILLIANT**
Measurements **5.15 - 5.17 X 3.12 MM**



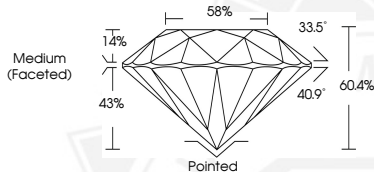
Sample Image Used

0.50 CARAT
D
FLAWLESS
IDEAL
EXCELLENT
EXCELLENT
NONE
IGI LG800684453

Comments: HEARTS & ARROWS As Grown - No indication of post-growth treatment. This Laboratory Grown Diamond was created by High Pressure High Temperature (HPHT) growth process. Type II

GRADING RESULTS

Carat Weight **0.50 CARAT**
Color Grade **D**
Clarity Grade **FLAWLESS**
Cut Grade **IDEAL**



ADDITIONAL GRADING INFORMATION

Polish **EXCELLENT**
Symmetry **EXCELLENT**
Fluorescence **NONE**
Inscription(s) **IGI LG800684453**

Comments: HEARTS & ARROWS As Grown - No indication of post-growth treatment. This Laboratory Grown Diamond was created by High Pressure High Temperature (HPHT) growth process. Type II

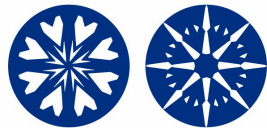


June 1, 2026

IGI Report Number LG800684453
ROUND BRILLIANT
LABORATORY GROWN DIAMOND
5.15 - 5.17 X 3.12 MM

0.50 CARAT
D
FLAWLESS
IDEAL
EXCELLENT
EXCELLENT
NONE
IGI LG800684453

Comments: HEARTS & ARROWS As Grown - No indication of post-growth treatment. This Laboratory Grown Diamond was created by High Pressure High Temperature (HPHT) growth process. Type II



HEARTS & ARROWS



THIS DOCUMENT WAS PRODUCED WITH THE FOLLOWING SECURITY MEASURES: SPECIAL DOCUMENT PAPER, INK SCREENS, WATERMARK, BACKGROUND DESIGNS, HOLOGRAM AND OTHER SECURITY FEATURES NOT LISTED AND DO EXCEED DOCUMENT SECURITY INDUSTRY GUIDELINES.

For terms & conditions and to verify this report, please visit www.igi.org