



ELECTRONIC COPY

LG800681675
Report verification at igi.org



June 17, 2026
IGI Report Number **LG800681675**
Description **LABORATORY GROWN DIAMOND**
Shape and Cutting Style **ANTIQUÉ CUSHION CUT**
Measurements **14.30 X 10.46 X 6.77 MM**
GRADING RESULTS
Carat Weight **8.18 CARATS**
Color Grade **FANCY BROWNISH PINK**
Clarity Grade **VVS 2**

June 17, 2026
IGI Report Number **LG800681675**
Description **LABORATORY GROWN DIAMOND**
Shape and Cutting Style **ANTIQUÉ CUSHION CUT**
Measurements **14.30 X 10.46 X 6.77 MM**

GRADING RESULTS

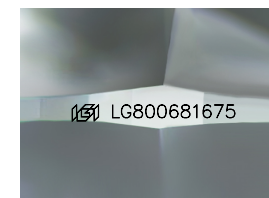
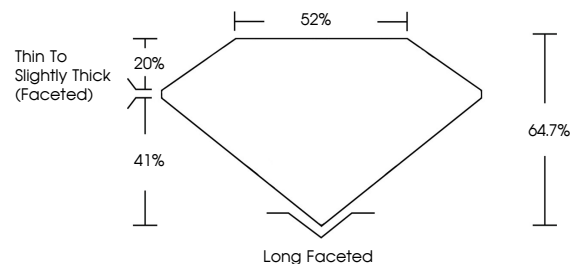
Carat Weight **8.18 CARATS**
Color Grade **FANCY BROWNISH PINK**
Clarity Grade **VVS 2**

ADDITIONAL GRADING INFORMATION

Polish **EXCELLENT**
Symmetry **EXCELLENT**
Fluorescence **VERY SLIGHT**
Inscription(s) **IGI LG800681675**

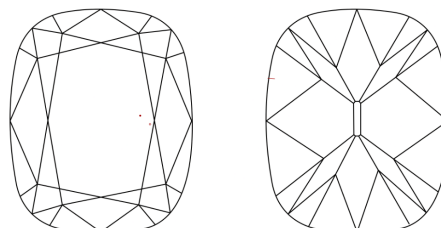
Comments: This Laboratory Grown Diamond was created by Chemical Vapor Deposition (CVD) growth process.
Indications of post-growth treatment.

PROPORTIONS



Sample Image Used

CLARITY CHARACTERISTICS



KEY TO SYMBOLS

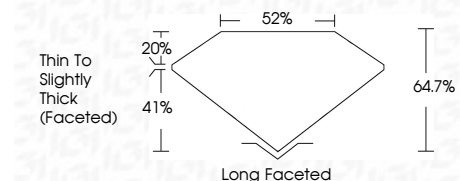
Red symbols indicate internal characteristics.
Green symbols indicate external characteristics.

COLOR

D E F G H I J Faint Very Light Light

CLARITY

FL	IF	VVS ¹⁻²	VS ¹⁻²	SI ¹⁻²	I ¹⁻³
Flawless	Internally Flawless	Very Very Slightly Included	Very Slightly Included	Slightly Included	Included



ADDITIONAL GRADING INFORMATION

Polish **EXCELLENT**
Symmetry **EXCELLENT**
Fluorescence **VERY SLIGHT**
Inscription(s) **IGI LG800681675**
Comments: This Laboratory Grown Diamond was created by Chemical Vapor Deposition (CVD) growth process.
Indications of post-growth treatment.



June 17, 2026
IGI Report No. **LG800681675**
ANTIQUÉ CUSHION CUT
14.30 X 10.46 X 6.77 MM
Carat Weight **8.18 CARATS**
Color Grade **FANCY BROWNISH PINK**
Clarity Grade **VVS 2**
Depth **64.7%**
Table **52%**
Girdle **Thin to Slightly Thick (Faceted)**
Culet **Long Faceted**
Polish **EXCELLENT**
Symmetry **EXCELLENT**
Fluorescence **VERY SLIGHT**
Inscription(s) **IGI LG800681675**
Comments: This Laboratory Grown Diamond was created by Chemical Vapor Deposition (CVD) growth process.
Indications of post-growth treatment.