



ELECTRONIC COPY

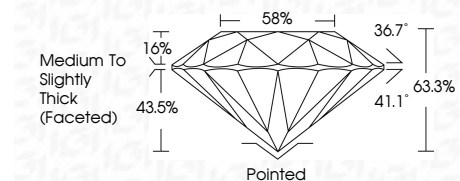
LG800678014 Report verification at igi.org



May 21, 2026 IGI Report Number LG800678014 Description LABORATORY GROWN DIAMOND Shape and Cutting Style ROUND BRILLIANT Measurements 7.19 - 7.26 X 4.58 MM

GRADING RESULTS

Carat Weight 1.50 CARAT Color Grade E Clarity Grade VS 2 Cut Grade EXCELLENT



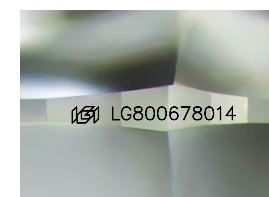
ADDITIONAL GRADING INFORMATION

Polish EXCELLENT Symmetry EXCELLENT Fluorescence NONE Inscription(s) LG800678014 Comments: As Grown - No indication of post-growth treatment. This Laboratory Grown Diamond was created by High Pressure High Temperature (HPHT) growth process. Type II



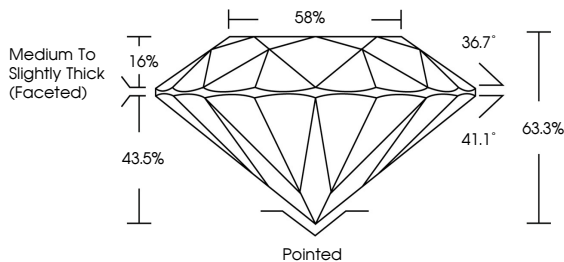
May 21, 2026 IGI Report No LG800678014 ROUND BRILLIANT 1.50 CARAT E VS 2 EXCELLENT 63.3% 58% Medium To Slightly Thick (Faceted) Pointed EXCELLENT EXCELLENT NONE LG800678014

Comments: As Grown - No indication of post-growth treatment. This Laboratory Grown Diamond was created by High Pressure High Temperature (HPHT) growth process. Type II

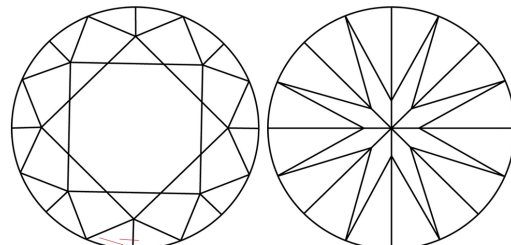


Sample Image Used

PROPORTIONS



CLARITY CHARACTERISTICS



KEY TO SYMBOLS

Red symbols indicate internal characteristics. Green symbols indicate external characteristics.

COLOR

Color scale table with categories D, E, F, G, H, I, J, Faint, Very Light, Light.

CLARITY

Clarity scale table with categories FL, IF, VS 1-2, VS 1-2, SI 1-2, I 1-3, Flawless, Internally Flawless, Very Very Slightly Included, Very Slightly Included, Slightly Included, Included.



May 21, 2026 IGI Report Number LG800678014 Description LABORATORY GROWN DIAMOND Shape and Cutting Style ROUND BRILLIANT Measurements 7.19 - 7.26 X 4.58 MM

GRADING RESULTS

Carat Weight 1.50 CARAT Color Grade E Clarity Grade VS 2 Cut Grade EXCELLENT

ADDITIONAL GRADING INFORMATION

Polish EXCELLENT Symmetry EXCELLENT Fluorescence NONE Inscription(s) LG800678014

Comments: As Grown - No indication of post-growth treatment. This Laboratory Grown Diamond was created by High Pressure High Temperature (HPHT) growth process. Type II