



**ELECTRONIC COPY**

LG800677353  
Report verification at [igi.org](http://igi.org)



May 25, 2026  
IGI Report Number **LG800677353**  
Description **LABORATORY GROWN DIAMOND**  
Shape and Cutting Style **CUSHION MODIFIED BRILLIANT**  
Measurements **9.72 X 7.20 X 4.96 MM**  
**GRADING RESULTS**  
Carat Weight **2.69 CARATS**  
Color Grade **D**  
Clarity Grade **FLAWLESS**

**LABORATORY GROWN DIAMOND REPORT**

May 25, 2026  
IGI Report Number **LG800677353**  
Description **LABORATORY GROWN DIAMOND**  
Shape and Cutting Style **CUSHION MODIFIED BRILLIANT**  
Measurements **9.72 X 7.20 X 4.96 MM**

**GRADING RESULTS**

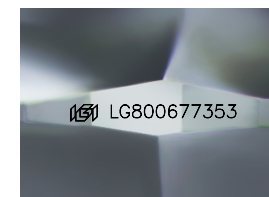
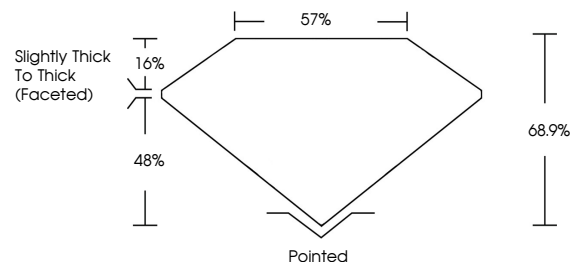
Carat Weight **2.69 CARATS**  
Color Grade **D**  
Clarity Grade **FLAWLESS**

**ADDITIONAL GRADING INFORMATION**

Polish **EXCELLENT**  
Symmetry **EXCELLENT**  
Fluorescence **NONE**  
Inscription(s) **LG800677353**

Comments: As Grown - No indication of post-growth treatment.  
This Laboratory Grown Diamond was created by High Pressure High Temperature (HPHT) growth process.  
Type II

**PROPORTIONS**



Sample Image Used

**CLARITY CHARACTERISTICS**



**KEY TO SYMBOLS**

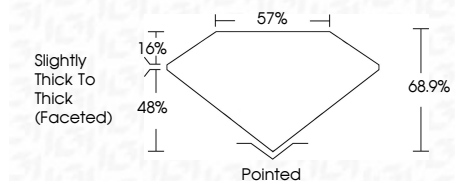
Red symbols indicate internal characteristics.  
Green symbols indicate external characteristics.

**COLOR**

D E F G H I J Faint Very Light Light

**CLARITY**

FL	IF	VS <sup>1-2</sup>	VS <sup>1-2</sup>	SI <sup>1-2</sup>	I <sup>1-3</sup>
Flawless	Internally Flawless	Very Very Slightly Included	Very Slightly Included	Slightly Included	Included



**ADDITIONAL GRADING INFORMATION**

Polish **EXCELLENT**  
Symmetry **EXCELLENT**  
Fluorescence **NONE**  
Inscription(s) **LG800677353**  
Comments: As Grown - No indication of post-growth treatment.  
This Laboratory Grown Diamond was created by High Pressure High Temperature (HPHT) growth process.  
Type II



May 25, 2026  
IGI Report No **LG800677353**  
**CUSHION MODIFIED BRILLIANT**  
9.72 X 7.20 X 4.96 MM  
2.69 CARATS  
D  
Color Grade **FLAWLESS**  
Depth 68.9%  
Table 57%  
Girdle Slightly Thick To Thick (Faceted)  
Culet Pointed  
Polish **EXCELLENT**  
Symmetry **EXCELLENT**  
Fluorescence **NONE**  
Inscription(s) **LG800677353**  
Comments: As Grown - No indication of post-growth treatment.  
This Laboratory Grown Diamond was created by High Pressure High Temperature (HPHT) growth process.  
Type II