



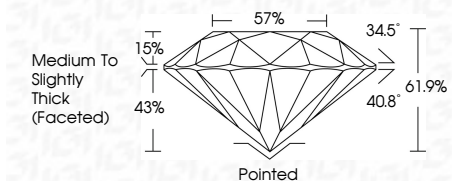
**ELECTRONIC COPY**

LG800677328  
Report verification at igi.org



May 25, 2026  
IGI Report Number **LG800677328**  
Description **LABORATORY GROWN DIAMOND**  
Shape and Cutting Style **ROUND BRILLIANT**  
Measurements **10.19 - 10.26 X 6.34 MM**

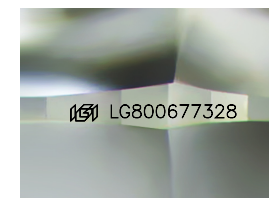
**GRADING RESULTS**  
Carat Weight **4.11 CARATS**  
Color Grade **D**  
Clarity Grade **FLAWLESS**  
Cut Grade **IDEAL**



**ADDITIONAL GRADING INFORMATION**  
Polish **EXCELLENT**  
Symmetry **EXCELLENT**  
Fluorescence **NONE**  
Inscription(s) **IGI LG800677328**  
Comments: HEARTS & ARROWS  
As Grown - No indication of post-growth treatment.  
This Laboratory Grown Diamond was created by High Pressure High Temperature (HPHT) growth process.  
Type II

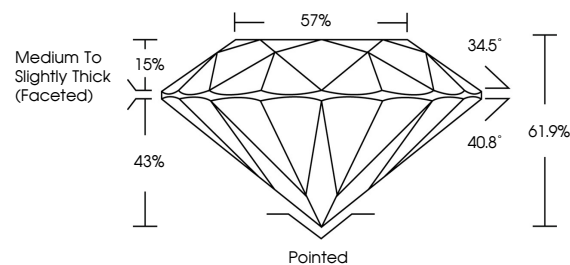


May 25, 2026  
IGI Report No LG800677328  
**ROUND BRILLIANT**  
10.19 - 10.26 X 6.34 MM  
4.11 CARATS  
D  
FLAWLESS  
IDEAL  
61.9%  
57%  
Medium To Slightly Thick (Faceted)  
Pointed  
EXCELLENT  
EXCELLENT  
NONE  
IGI LG800677328  
Comments: HEARTS & ARROWS  
As Grown - No indication of post-growth treatment.  
This Laboratory Grown Diamond was created by High Pressure High Temperature (HPHT) growth process.  
Type II



Sample Image Used

**PROPORTIONS**



**CLARITY CHARACTERISTICS**



**KEY TO SYMBOLS**

Red symbols indicate internal characteristics.  
Green symbols indicate external characteristics.



**COLOR**

D E F G H I J Faint Very Light Light

**CLARITY**

FL	IF	VS <sup>1-2</sup>	VS <sup>1-2</sup>	SI <sup>1-2</sup>	I <sup>1-3</sup>
Flawless	Internally Flawless	Very Very Slightly Included	Very Slightly Included	Slightly Included	Included

