



**ELECTRONIC COPY**

LG800677294  
Report verification at igi.org



May 26, 2026  
IGI Report Number **LG800677294**

Description **LABORATORY GROWN DIAMOND**

Shape and Cutting Style **OVAL BRILLIANT**

Measurements **12.01 X 8.62 X 5.20 MM**

**GRADING RESULTS**

Carat Weight **3.45 CARATS**

Color Grade **D**

Clarity Grade **FLAWLESS**

May 26, 2026  
IGI Report Number **LG800677294**  
Description **LABORATORY GROWN DIAMOND**  
Shape and Cutting Style **OVAL BRILLIANT**  
Measurements **12.01 X 8.62 X 5.20 MM**

**GRADING RESULTS**

Carat Weight **3.45 CARATS**

Color Grade **D**

Clarity Grade **FLAWLESS**

**ADDITIONAL GRADING INFORMATION**

Polish **EXCELLENT**

Symmetry **EXCELLENT**

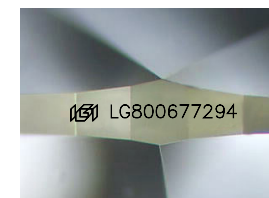
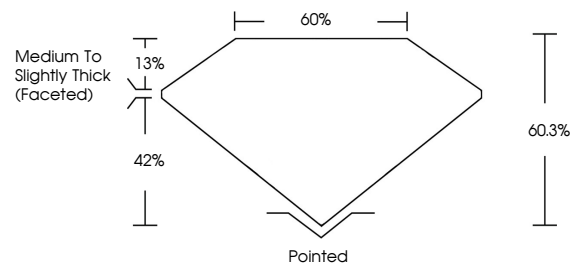
Fluorescence **NONE**

Inscription(s) **IGI LG800677294**

Comments: As Grown - No indication of post-growth treatment.

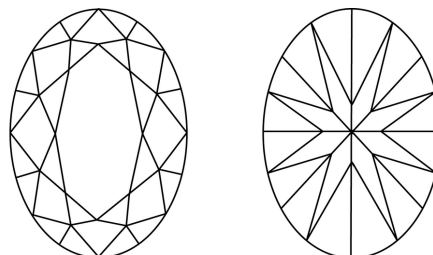
This Laboratory Grown Diamond was created by High Pressure High Temperature (HPHT) growth process. Type II

**PROPORTIONS**



Sample Image Used

**CLARITY CHARACTERISTICS**



**KEY TO SYMBOLS**

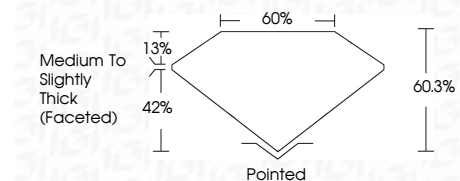
Red symbols indicate internal characteristics.  
Green symbols indicate external characteristics.

**COLOR**

D E F G H I J Faint Very Light Light

**CLARITY**

FL	IF	VS <sup>1-2</sup>	VS <sup>1-2</sup>	SI <sup>1-2</sup>	I <sup>1-3</sup>
Flawless	Internally Flawless	Very Very Slightly Included	Very Slightly Included	Slightly Included	Included



**ADDITIONAL GRADING INFORMATION**

Polish **EXCELLENT**

Symmetry **EXCELLENT**

Fluorescence **NONE**

Inscription(s) **IGI LG800677294**

Comments: As Grown - No indication of post-growth treatment.

This Laboratory Grown Diamond was created by High Pressure High Temperature (HPHT) growth process. Type II



**IGI**



May 26, 2026  
IGI Report No LG800677294  
OVAL BRILLIANT  
12.01 X 8.62 X 5.20 MM  
Carat Weight **3.45 CARATS**  
Color Grade **D**  
Clarity Grade **FLAWLESS**  
Depth **60.3%**  
Table **60%**  
Girdle **Medium to Slightly Thick (Faceted)**  
Culet **Pointed**  
Polish **EXCELLENT**  
Symmetry **EXCELLENT**  
Fluorescence **NONE**  
Inscription(s) **IGI LG800677294**  
Comments: As Grown - No indication of post-growth treatment.  
This Laboratory Grown Diamond was created by High Pressure High Temperature (HPHT) growth process. Type II