



ELECTRONIC COPY

LG800677067
Report verification at igi.org



June 27, 2026
IGI Report Number **LG800677067**
Description **LABORATORY GROWN DIAMOND**
Shape and Cutting Style **PRINCESS CUT**
Measurements **5.80 X 5.68 X 3.96 MM**
GRADING RESULTS
Carat Weight **1.20 CARAT**
Color Grade **D**
Clarity Grade **FLAWLESS**

June 27, 2026
IGI Report Number **LG800677067**
Description **LABORATORY GROWN DIAMOND**
Shape and Cutting Style **PRINCESS CUT**
Measurements **5.80 X 5.68 X 3.96 MM**

GRADING RESULTS

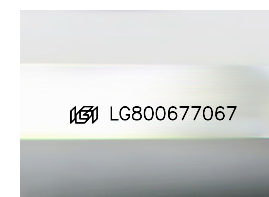
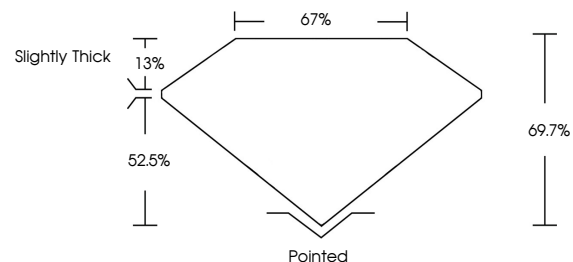
Carat Weight **1.20 CARAT**
Color Grade **D**
Clarity Grade **FLAWLESS**

ADDITIONAL GRADING INFORMATION

Polish **EXCELLENT**
Symmetry **EXCELLENT**
Fluorescence **NONE**
Inscription(s) **IGI LG800677067**

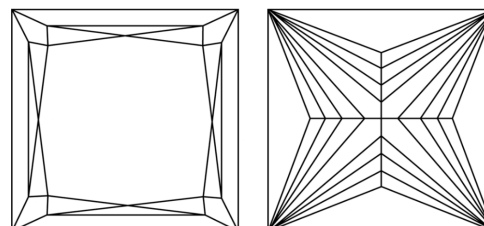
Comments: As Grown - No indication of post-growth treatment.
This Laboratory Grown Diamond was created by High Pressure High Temperature (HPHT) growth process. Type II

PROPORTIONS



Sample Image Used

CLARITY CHARACTERISTICS



KEY TO SYMBOLS

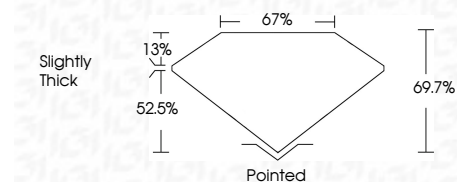
Red symbols indicate internal characteristics.
Green symbols indicate external characteristics.

COLOR

D E F G H I J Faint Very Light Light

CLARITY

FL	IF	VS ¹⁻²	VS ¹⁻²	SI ¹⁻²	I ¹⁻³
Flawless	Internally Flawless	Very Very Slightly Included	Very Slightly Included	Slightly Included	Included



ADDITIONAL GRADING INFORMATION

Polish **EXCELLENT**
Symmetry **EXCELLENT**
Fluorescence **NONE**
Inscription(s) **IGI LG800677067**
Comments: As Grown - No indication of post-growth treatment.
This Laboratory Grown Diamond was created by High Pressure High Temperature (HPHT) growth process. Type II



June 27, 2026
IGI Report No. LG800677067
PRINCESS CUT
5.80 X 5.68 X 3.96 MM
1.20 CARAT
D
FLAWLESS
67%
52.5%
Slightly Thick
Pointed
EXCELLENT
EXCELLENT
NONE
IGI LG800677067
Comments: As Grown - No indication of post-growth treatment.
This Laboratory Grown Diamond was created by High Pressure High Temperature (HPHT) growth process. Type II