



ELECTRONIC COPY

LG800676647 Report verification at igi.org



June 18, 2026

IGI Report Number LG800676647

Description LABORATORY GROWN DIAMOND

Shape and Cutting Style CUT CORNERED RECTANGULAR MODIFIED BRILLIANT

Measurements 7.92 X 5.28 X 3.93 MM

GRADING RESULTS

Carat Weight 1.46 CARAT

Color Grade D

Clarity Grade FLAWLESS

LABORATORY GROWN DIAMOND REPORT

June 18, 2026

IGI Report Number LG800676647

Description LABORATORY GROWN DIAMOND

Shape and Cutting Style CUT CORNERED RECTANGULAR MODIFIED BRILLIANT

Measurements 7.92 X 5.28 X 3.93 MM

GRADING RESULTS

Carat Weight 1.46 CARAT

Color Grade D

Clarity Grade FLAWLESS

ADDITIONAL GRADING INFORMATION

Polish EXCELLENT

Symmetry EXCELLENT

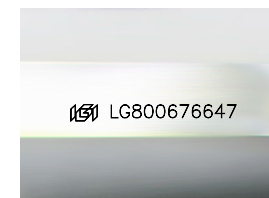
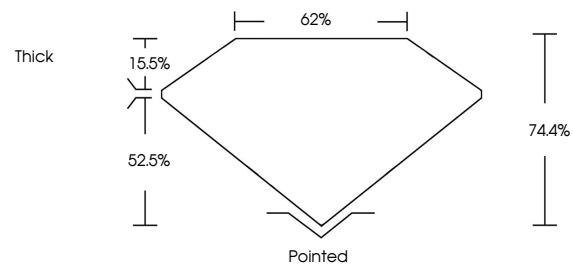
Fluorescence NONE

Inscription(s) LG800676647

Comments: As Grown - No indication of post-growth treatment.

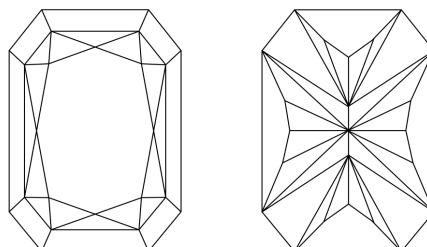
This Laboratory Grown Diamond was created by High Pressure High Temperature (HPHT) growth process. Type II

PROPORTIONS



Sample Image Used

CLARITY CHARACTERISTICS



KEY TO SYMBOLS

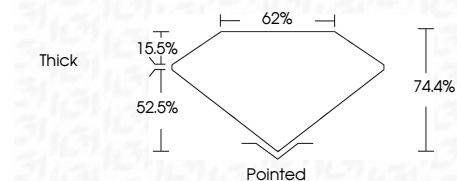
Red symbols indicate internal characteristics. Green symbols indicate external characteristics.

COLOR

D E F G H I J Faint Very Light Light

CLARITY

FL IF VS 1-2 VS 1-2 SI 1-2 I 1-3 Flawless Internally Flawless Very Very Slightly Included Very Slightly Included Slightly Included Included



ADDITIONAL GRADING INFORMATION

Polish EXCELLENT

Symmetry EXCELLENT

Fluorescence NONE

Inscription(s) LG800676647

Comments: As Grown - No indication of post-growth treatment.

This Laboratory Grown Diamond was created by High Pressure High Temperature (HPHT) growth process. Type II



IGI



June 18, 2026 IGI Report No LG800676647 CUT CORNERED RECT. MODIFIED BRILLIANT 1.46 CARAT D FLAWLESS 74.4% 62% Thick Pointed EXCELLENT EXCELLENT NONE NONE LG800676647

Comments: As Grown - No indication of post-growth treatment. This Laboratory Grown Diamond was created by High Pressure High Temperature (HPHT) growth process. Type II