



June 17, 2026

**IGI Report Number LG800676570**  
**ROUND BRILLIANT**  
**LABORATORY GROWN DIAMOND**  
**6.22 - 6.25 X 3.81 MM**

**LABORATORY GROWN DIAMOND REPORT**

June 17, 2026  
IGI Report Number **LG800676570**  
Description **LABORATORY GROWN DIAMOND**  
Shape and Cutting Style **ROUND BRILLIANT**  
Measurements **6.22 - 6.25 X 3.81 MM**

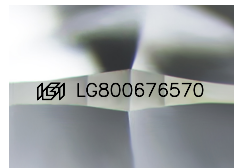
**GRADING RESULTS**

Carat Weight **0.91 CARAT**  
Color Grade **D**  
Clarity Grade **FLAWLESS**  
Cut Grade **IDEAL**

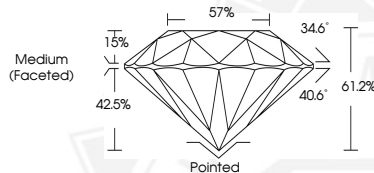
**ADDITIONAL GRADING INFORMATION**

Polish **EXCELLENT**  
Symmetry **EXCELLENT**  
Fluorescence **NONE**  
Inscription(s) **IGI LG800676570**

Comments: HEARTS & ARROWS  
As Grown - No indication of post-growth treatment.  
This Laboratory Grown Diamond was created by High Pressure High Temperature (HPHT) growth process.  
Type II



Sample Image Used



**0.91 CARAT**  
**D**  
**FLAWLESS**  
**IDEAL**  
**EXCELLENT**  
**EXCELLENT**  
**NONE**  
**IGI LG800676570**

Comments: HEARTS & ARROWS As Grown - No indication of post-growth treatment. This Laboratory Grown Diamond was created by High Pressure High Temperature (HPHT) growth process. Type II

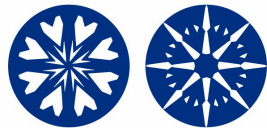


June 17, 2026

**IGI Report Number LG800676570**  
**ROUND BRILLIANT**  
**LABORATORY GROWN DIAMOND**  
**6.22 - 6.25 X 3.81 MM**

**0.91 CARAT**  
**D**  
**FLAWLESS**  
**IDEAL**  
**EXCELLENT**  
**EXCELLENT**  
**NONE**  
**IGI LG800676570**

Comments: HEARTS & ARROWS As Grown - No indication of post-growth treatment. This Laboratory Grown Diamond was created by High Pressure High Temperature (HPHT) growth process. Type II



**HEARTS & ARROWS**



THIS DOCUMENT WAS PRODUCED WITH THE FOLLOWING SECURITY MEASURES: SPECIAL DOCUMENT PAPER, INK SCREENS, WATERMARK, BACKGROUND DESIGNS, HOLOGRAM AND OTHER SECURITY FEATURES NOT LISTED AND DO EXCEED DOCUMENT SECURITY INDUSTRY GUIDELINES.