



May 13, 2026

IGI Report Number **LG800671746**

**OVAL BRILLIANT  
LABORATORY GROWN DIAMOND**

**6.41 X 4.22 X 2.62 MM**

Carat Weight **0.43 CARAT**  
Color Grade **D**  
Clarity Grade **VVS 1**  
Polish **EXCELLENT**  
Symmetry **EXCELLENT**  
Fluorescence **NONE**  
Inscription(s) **IGI LG800671746**

Comments: This Laboratory Grown Diamond was created by Chemical Vapor Deposition (CVD) growth process. Type IIa

**LABORATORY GROWN DIAMOND REPORT**

May 13, 2026  
IGI Report Number **LG800671746**  
Description **LABORATORY GROWN DIAMOND**  
Shape and Cutting Style **OVAL BRILLIANT**  
Measurements **6.41 X 4.22 X 2.62 MM**

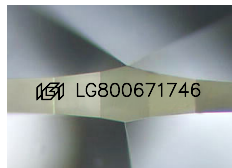
**GRADING RESULTS**

Carat Weight **0.43 CARAT**  
Color Grade **D**  
Clarity Grade **VVS 1**

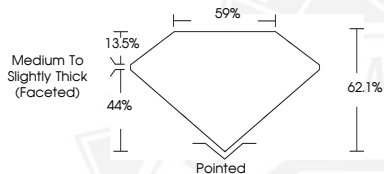
**ADDITIONAL GRADING INFORMATION**

Polish **EXCELLENT**  
Symmetry **EXCELLENT**  
Fluorescence **NONE**  
Inscription(s) **IGI LG800671746**

Comments: This Laboratory Grown Diamond was created by Chemical Vapor Deposition (CVD) growth process.  
Type IIa



Sample Image Used



May 13, 2026

IGI Report Number **LG800671746**

**OVAL BRILLIANT  
LABORATORY GROWN DIAMOND**

**6.41 X 4.22 X 2.62 MM**

Carat Weight **0.43 CARAT**  
Color Grade **D**  
Clarity Grade **VVS 1**  
Polish **EXCELLENT**  
Symmetry **EXCELLENT**  
Fluorescence **NONE**  
Inscription(s) **IGI LG800671746**

Comments: This Laboratory Grown Diamond was created by Chemical Vapor Deposition (CVD) growth process. Type IIa



THIS DOCUMENT WAS PRODUCED WITH THE FOLLOWING SECURITY MEASURES: SPECIAL DOCUMENT PAPER, INK SCREENS, WATERMARK, BACKGROUND DESIGNS, HOLOGRAM AND OTHER SECURITY FEATURES NOT LISTED AND DO EXCEED DOCUMENT SECURITY INDUSTRY GUIDELINES.