



ELECTRONIC COPY

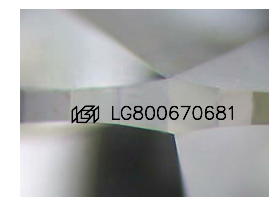
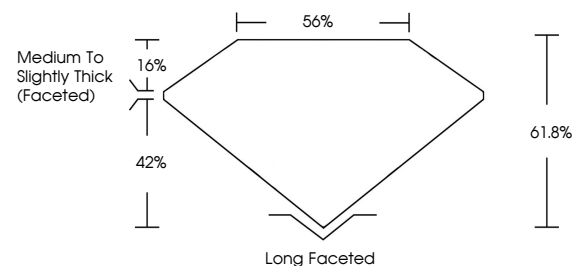
LG800670681
Report verification at igi.org



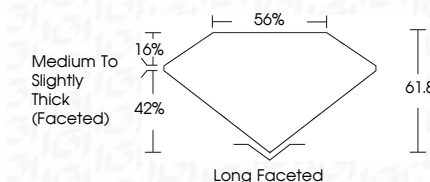
May 14, 2026
IGI Report Number **LG800670681**
Description **LABORATORY GROWN DIAMOND**
Shape and Cutting Style **OVAL BRILLIANT**
Measurements **14.54 X 8.68 X 5.36 MM**
GRADING RESULTS
Carat Weight **4.33 CARATS**
Color Grade **E**
Clarity Grade **VVS 2**

May 14, 2026
IGI Report Number **LG800670681**
Description **LABORATORY GROWN DIAMOND**
Shape and Cutting Style **OVAL BRILLIANT**
Measurements **14.54 X 8.68 X 5.36 MM**
GRADING RESULTS
Carat Weight **4.33 CARATS**
Color Grade **E**
Clarity Grade **VVS 2**

PROPORTIONS



Sample Image Used



ADDITIONAL GRADING INFORMATION

Polish **EXCELLENT**
Symmetry **EXCELLENT**
Fluorescence **NONE**
Inscription(s) **IGI LG800670681**

Comments: This Laboratory Grown Diamond was created by Chemical Vapor Deposition (CVD) growth process.
Type IIa

ADDITIONAL GRADING INFORMATION

Polish **EXCELLENT**
Symmetry **EXCELLENT**
Fluorescence **NONE**
Inscription(s) **IGI LG800670681**
Comments: This Laboratory Grown Diamond was created by Chemical Vapor Deposition (CVD) growth process.
Type IIa

COLOR

D E F G H I J Faint Very Light Light

CLARITY

FL	IF	VS ¹⁻²	VS ¹⁻²	SI ¹⁻²	I ¹⁻³
Flawless	Internally Flawless	Very Very Slightly Included	Very Slightly Included	Slightly Included	Included



IGI



May 14, 2026
IGI Report No LG800670681
OVAL BRILLIANT

14.54 X 8.68 X 5.36 MM
4.33 CARATS
Color Grade **E**
Clarity Grade **VVS 2**
Table **61.8%**
Girdle **65%**
Medium to Slightly Thick (Faceted)
Culet **Long Faceted**
Polish **EXCELLENT**
Symmetry **EXCELLENT**
Fluorescence **NONE**
Inscription(s) **IGI LG800670681**

Comments: This Laboratory Grown Diamond was created by Chemical Vapor Deposition (CVD) growth process.
Type IIa