



ELECTRONIC COPY

LG800667381
Report verification at igi.org



May 16, 2026

IGI Report Number **LG800667381**

Description **LABORATORY GROWN DIAMOND**

Shape and Cutting Style **ROUND BRILLIANT**

Measurements **9.88 - 9.91 X 5.90 MM**

GRADING RESULTS

Carat Weight **3.53 CARATS**

Color Grade **F**

Clarity Grade **VVS 2**

Cut Grade **IDEAL**

May 16, 2026

IGI Report Number **LG800667381**

Description **LABORATORY GROWN DIAMOND**

Shape and Cutting Style **ROUND BRILLIANT**

Measurements **9.88 - 9.91 X 5.90 MM**

GRADING RESULTS

Carat Weight **3.53 CARATS**

Color Grade **F**

Clarity Grade **VVS 2**

Cut Grade **IDEAL**

ADDITIONAL GRADING INFORMATION

Polish **EXCELLENT**

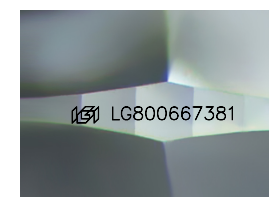
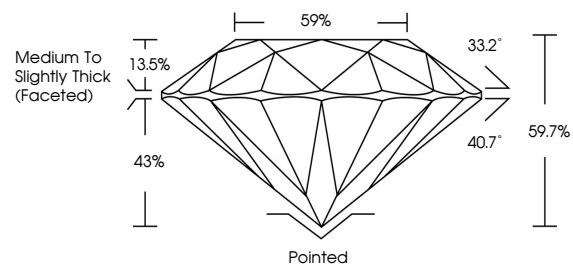
Symmetry **EXCELLENT**

Fluorescence **NONE**

Inscription(s) **LG800667381**

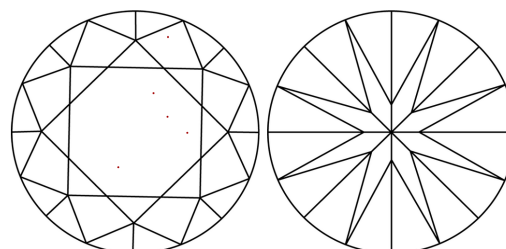
Comments: This Laboratory Grown Diamond was created by Chemical Vapor Deposition (CVD) growth process.
Type IIa

PROPORTIONS



Sample Image Used

CLARITY CHARACTERISTICS



KEY TO SYMBOLS

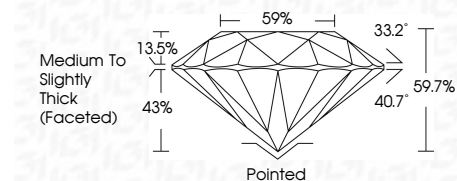
Red symbols indicate internal characteristics.
Green symbols indicate external characteristics.

COLOR

D E F G H I J Faint Very Light Light

CLARITY

FL	IF	VVS ¹⁻²	VS ¹⁻²	SI ¹⁻²	I ¹⁻³
Flawless	Internally Flawless	Very Very Slightly Included	Very Slightly Included	Slightly Included	Included



ADDITIONAL GRADING INFORMATION

Polish **EXCELLENT**

Symmetry **EXCELLENT**

Fluorescence **NONE**

Inscription(s) **LG800667381**

Comments: This Laboratory Grown Diamond was created by Chemical Vapor Deposition (CVD) growth process.
Type IIa



IGI



May 16, 2026
IGI Report No LG800667381
ROUND BRILLIANT

3.53 CARATS
Color Grade **F**

VVS 2
Clarity Grade **IDEAL**

59.7%
Depth

59%
Table

Medium To Slightly Thick (Faceted)
Girdle

Pointed
Culet

EXCELLENT
Polish

EXCELLENT
Symmetry

NONE
Fluorescence

IGI LG800667381
Inscription(s)

Comments: This Laboratory Grown Diamond was created by Chemical Vapor Deposition (CVD) growth process.
Type IIa