



ELECTRONIC COPY

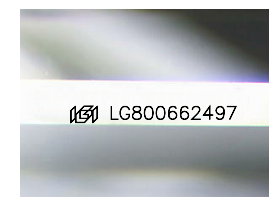
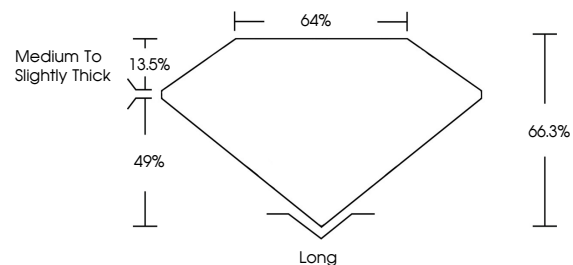
LG800662497
Report verification at igi.org



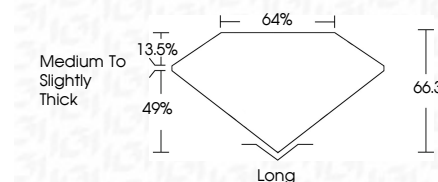
May 11, 2026
IGI Report Number **LG800662497**
Description **LABORATORY GROWN DIAMOND**
Shape and Cutting Style **CUT CORNERED
RECTANGULAR MIXED CUT**
Measurements **11.26 X 7.77 X 5.15 MM**
GRADING RESULTS
Carat Weight **4.39 CARATS**
Color Grade **D**
Clarity Grade **VVS 2**

May 11, 2026
IGI Report Number **LG800662497**
Description **LABORATORY GROWN DIAMOND**
Shape and Cutting Style **CUT CORNERED RECTANGULAR
MIXED CUT**
Measurements **11.26 X 7.77 X 5.15 MM**
GRADING RESULTS
Carat Weight **4.39 CARATS**
Color Grade **D**
Clarity Grade **VVS 2**

PROPORTIONS



Sample Image Used



ADDITIONAL GRADING INFORMATION

Polish **EXCELLENT**
Symmetry **EXCELLENT**
Fluorescence **NONE**
Inscription(s) **IGI LG800662497**

Comments: This Laboratory Grown Diamond was created by Chemical Vapor Deposition (CVD) growth process. Type IIa

ADDITIONAL GRADING INFORMATION

Polish **EXCELLENT**
Symmetry **EXCELLENT**
Fluorescence **NONE**
Inscription(s) **IGI LG800662497**
Comments: This Laboratory Grown Diamond was created by Chemical Vapor Deposition (CVD) growth process. Type IIa

COLOR

D E F G H I J Faint Very Light Light

CLARITY

FL	IF	VVS ¹⁻²	VS ¹⁻²	SI ¹⁻²	I ¹⁻³
Flawless	Internally Flawless	Very Very Slightly Included	Very Slightly Included	Slightly Included	Included



IGI

May 11, 2026
IGI Report No. **LG800662497**
CUT CORNERED RECT. MIXED CUT
4.39 CARATS
D
VVS 2
66.3%
49%
Medium to Slightly Thick
Long
EXCELLENT
EXCELLENT
NONE
IGI LG800662497

Comments: This Laboratory Grown Diamond was created by Chemical Vapor Deposition (CVD) growth process. Type IIa