



**ELECTRONIC COPY**

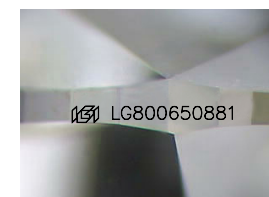
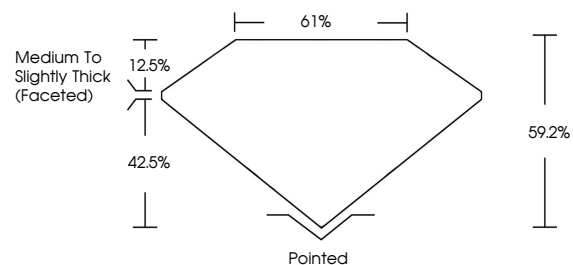
LG800650881  
Report verification at igi.org



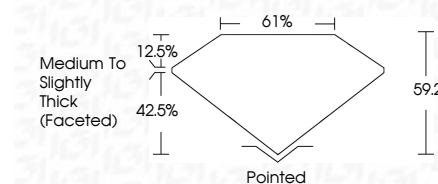
May 13, 2026  
IGI Report Number **LG800650881**  
Description **LABORATORY GROWN DIAMOND**  
Shape and Cutting Style **PEAR BRILLIANT**  
Measurements **11.54 X 7.58 X 4.49 MM**  
**GRADING RESULTS**  
Carat Weight **2.29 CARATS**  
Color Grade **E**  
Clarity Grade **VVS 2**

May 13, 2026  
IGI Report Number **LG800650881**  
Description **LABORATORY GROWN DIAMOND**  
Shape and Cutting Style **PEAR BRILLIANT**  
Measurements **11.54 X 7.58 X 4.49 MM**  
**GRADING RESULTS**  
Carat Weight **2.29 CARATS**  
Color Grade **E**  
Clarity Grade **VVS 2**

**PROPORTIONS**



Sample Image Used



**ADDITIONAL GRADING INFORMATION**  
Polish **EXCELLENT**  
Symmetry **EXCELLENT**  
Fluorescence **NONE**  
Inscription(s) **IGI LG800650881**  
Comments: This Laboratory Grown Diamond was created by Chemical Vapor Deposition (CVD) growth process.  
Type IIa

**COLOR**

D E F G H I J Faint Very Light Light

**CLARITY**

FL	IF	VS <sup>1-2</sup>	VS <sup>1-2</sup>	SI <sup>1-2</sup>	I <sup>1-3</sup>
Flawless	Internally Flawless	Very Very Slightly Included	Very Slightly Included	Slightly Included	Included

**ADDITIONAL GRADING INFORMATION**

Polish **EXCELLENT**  
Symmetry **EXCELLENT**  
Fluorescence **NONE**  
Inscription(s) **IGI LG800650881**  
Comments: This Laboratory Grown Diamond was created by Chemical Vapor Deposition (CVD) growth process.  
Type IIa



**IGI**



May 13, 2026  
IGI Report No. LG800650881  
**PEAR BRILLIANT**  
2.29 CARATS  
E  
11.54 X 7.58 X 4.49 MM  
Carat Weight  
Color Grade  
VVS 2  
Clarity Grade  
59.2%  
61%  
Medium to Slightly Thick (Faceted)  
Pointed  
EXCELLENT  
EXCELLENT  
NONE  
IGI LG800650881  
Inscription(s)  
Comments: This Laboratory Grown Diamond was created by Chemical Vapor Deposition (CVD) growth process.  
Type IIa