



**ELECTRONIC COPY**

LG800650684  
Report verification at igi.org



May 12, 2026

IGI Report Number **LG800650684**

Description **LABORATORY GROWN DIAMOND**

Shape and Cutting Style **ROUND BRILLIANT**

Measurements **8.26 - 8.30 X 5.15 MM**

**GRADING RESULTS**

Carat Weight **2.19 CARATS**

Color Grade **D**

Clarity Grade **VVS 2**

Cut Grade **IDEAL**

May 12, 2026

IGI Report Number **LG800650684**

Description **LABORATORY GROWN DIAMOND**

Shape and Cutting Style **ROUND BRILLIANT**

Measurements **8.26 - 8.30 X 5.15 MM**

**GRADING RESULTS**

Carat Weight **2.19 CARATS**

Color Grade **D**

Clarity Grade **VVS 2**

Cut Grade **IDEAL**

**ADDITIONAL GRADING INFORMATION**

Polish **EXCELLENT**

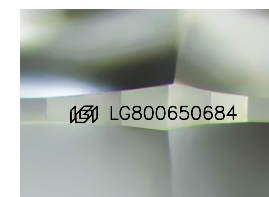
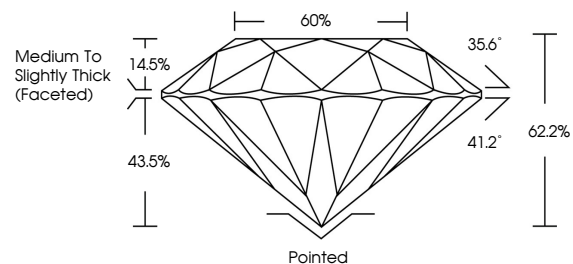
Symmetry **EXCELLENT**

Fluorescence **NONE**

Inscription(s) **IGI LG800650684**

Comments: This Laboratory Grown Diamond was created by Chemical Vapor Deposition (CVD) growth process. Type IIa

**PROPORTIONS**



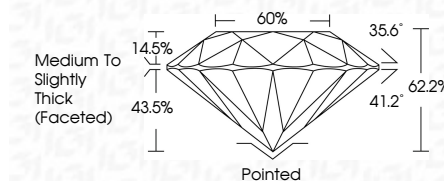
Sample Image Used

**COLOR**

D E F G H I J Faint Very Light Light

**CLARITY**

FL	IF	VVS <sup>1-2</sup>	VS <sup>1-2</sup>	SI <sup>1-2</sup>	I <sup>1-3</sup>
Flawless	Internally Flawless	Very Very Slightly Included	Very Slightly Included	Slightly Included	Included



**ADDITIONAL GRADING INFORMATION**

Polish **EXCELLENT**

Symmetry **EXCELLENT**

Fluorescence **NONE**

Inscription(s) **IGI LG800650684**

Comments: This Laboratory Grown Diamond was created by Chemical Vapor Deposition (CVD) growth process. Type IIa



**IGI**



May 12, 2026  
IGI Report No LG800650684  
ROUND BRILLIANT

2.19 CARATS  
Carat Weight  
Color Grade D  
Clarity Grade VVS 2  
Depth 62.2%  
Table 14.5%  
Girdle 43.5%  
Medium To Slightly Thick (Faceted)

Pointed  
Culet  
Polish EXCELLENT  
Symmetry EXCELLENT  
Fluorescence NONE  
Inscriptions(s) IGI LG800650684

Comments: This Laboratory Grown Diamond was created by Chemical Vapor Deposition (CVD) growth process. Type IIa