



ELECTRONIC COPY

LG800646923
Report verification at igi.org



May 16, 2026
IGI Report Number **LG800646923**
Description **LABORATORY GROWN DIAMOND**
Shape and Cutting Style **CUT CORNERED
RECTANGULAR MODIFIED
BRILLIANT**
Measurements **8.22 X 5.66 X 3.83 MM**
GRADING RESULTS
Carat Weight **1.54 CARAT**
Color Grade **FANCY VIVID PINK**
Clarity Grade **VVS 2**

May 16, 2026
IGI Report Number **LG800646923**
Description **LABORATORY GROWN DIAMOND**
Shape and Cutting Style **CUT CORNERED RECTANGULAR
MODIFIED BRILLIANT**
Measurements **8.22 X 5.66 X 3.83 MM**

GRADING RESULTS

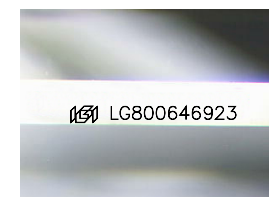
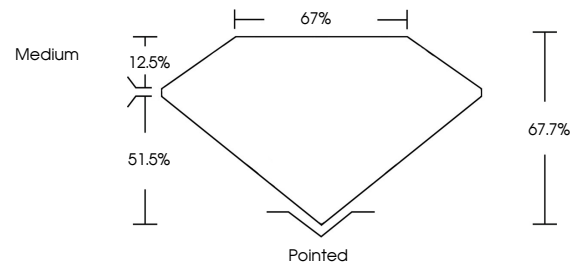
Carat Weight **1.54 CARAT**
Color Grade **FANCY VIVID PINK**
Clarity Grade **VVS 2**

ADDITIONAL GRADING INFORMATION

Polish **EXCELLENT**
Symmetry **EXCELLENT**
Fluorescence **STRONG**
Inscription(s) **IGI LG800646923**

Comments: This Laboratory Grown Diamond was created by Chemical Vapor Deposition (CVD) growth process.
Indications of post-growth treatment.

PROPORTIONS



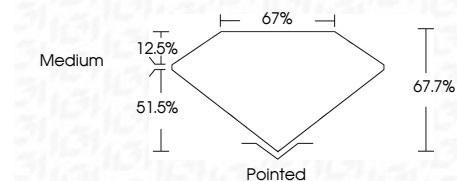
Sample Image Used

COLOR

D E F G H I J Faint Very Light Light

CLARITY

FL	IF	VVS ¹⁻²	VS ¹⁻²	SI ¹⁻²	I ¹⁻³
Flawless	Internally Flawless	Very Very Slightly Included	Very Slightly Included	Slightly Included	Included



ADDITIONAL GRADING INFORMATION

Polish **EXCELLENT**
Symmetry **EXCELLENT**
Fluorescence **STRONG**
Inscription(s) **IGI LG800646923**
Comments: This Laboratory Grown Diamond was created by Chemical Vapor Deposition (CVD) growth process.
Indications of post-growth treatment.



May 16, 2026
IGI Report No **LG800646923**
CUT CORNERED RECT. MODIFIED BRILLIANT
8.22 X 5.66 X 3.83 MM
Carat Weight **1.54 CARAT**
Color Grade **FANCY VIVID PINK**
Clarity Grade **VVS 2**
Depth **67.7%**
Table **67%**
Girdle **Medium**
Culet **Pointed**
Polish **EXCELLENT**
Symmetry **EXCELLENT**
Fluorescence **STRONG**
Inscription(s) **IGI LG800646923**
Comments: This Laboratory Grown Diamond was created by Chemical Vapor Deposition (CVD) growth process.
Indications of post-growth treatment.