



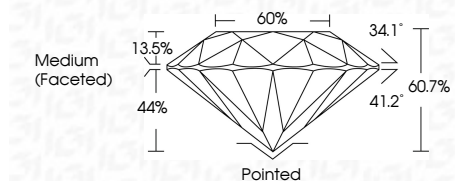
ELECTRONIC COPY

LG800644906 Report verification at igi.org



May 14, 2026 IGI Report Number LG800644906 Description LABORATORY GROWN DIAMOND Shape and Cutting Style ROUND BRILLIANT Measurements 6.55 - 6.57 X 3.98 MM

GRADING RESULTS Carat Weight 1.03 CARAT Color Grade D Clarity Grade VS 1 Cut Grade IDEAL

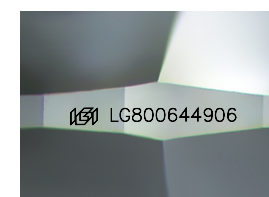
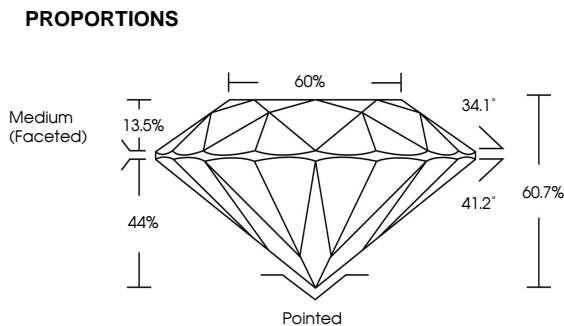


ADDITIONAL GRADING INFORMATION Polish EXCELLENT Symmetry EXCELLENT Fluorescence NONE Inscription(s) IGI LG800644906 Comments: As Grown - No indication of post-growth treatment. This Laboratory Grown Diamond was created by High Pressure High Temperature (HPHT) growth process. Type II



May 14, 2026 IGI Report No LG800644906 ROUND BRILLIANT 6.55 - 6.57 X 3.98 MM 1.03 CARAT D VS 1 IDEAL 60.7% 60% Medium (Faceted) Pointed EXCELLENT EXCELLENT NONE IGI LG800644906 Comments: As Grown - No indication of post-growth treatment. This Laboratory Grown Diamond was created by High Pressure High Temperature (HPHT) growth process. Type II

May 14, 2026 IGI Report Number LG800644906 Description LABORATORY GROWN DIAMOND Shape and Cutting Style ROUND BRILLIANT Measurements 6.55 - 6.57 X 3.98 MM GRADING RESULTS Carat Weight 1.03 CARAT Color Grade D Clarity Grade VS 1 Cut Grade IDEAL



Sample Image Used

Table with columns for Color grades: D, E, F, G, H, I, J, Faint, Very Light, Light

Table with columns for Clarity grades: FL, IF, VS 1-2, VS 1-2, SI 1-2, I 1-3

