



ELECTRONIC COPY

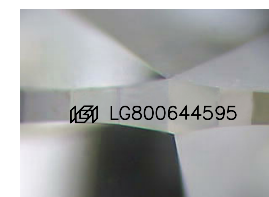
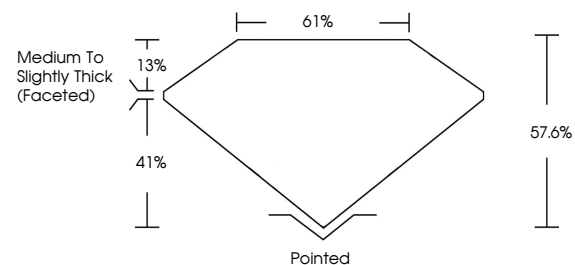
LG800644595
Report verification at igi.org



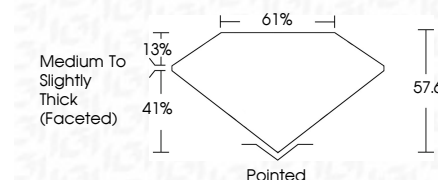
May 12, 2026
IGI Report Number **LG800644595**
Description **LABORATORY GROWN DIAMOND**
Shape and Cutting Style **HEART BRILLIANT**
Measurements **5.87 X 7.06 X 4.07 MM**
GRADING RESULTS
Carat Weight **1.01 CARAT**
Color Grade **D**
Clarity Grade **VS 1**

May 12, 2026
IGI Report Number **LG800644595**
Description **LABORATORY GROWN DIAMOND**
Shape and Cutting Style **HEART BRILLIANT**
Measurements **5.87 X 7.06 X 4.07 MM**
GRADING RESULTS
Carat Weight **1.01 CARAT**
Color Grade **D**
Clarity Grade **VS 1**

PROPORTIONS



Sample Image Used



ADDITIONAL GRADING INFORMATION

Polish **EXCELLENT**
Symmetry **VERY GOOD**
Fluorescence **NONE**
Inscription(s) **IGI LG800644595**

Comments: As Grown - No indication of post-growth treatment.
This Laboratory Grown Diamond was created by High Pressure High Temperature (HPHT) growth process. Type II

ADDITIONAL GRADING INFORMATION

Polish **EXCELLENT**
Symmetry **VERY GOOD**
Fluorescence **NONE**
Inscription(s) **IGI LG800644595**
Comments: As Grown - No indication of post-growth treatment.
This Laboratory Grown Diamond was created by High Pressure High Temperature (HPHT) growth process. Type II

COLOR

D E F G H I J Faint Very Light Light

CLARITY

FL	IF	VS ¹⁻²	VS ¹⁻²	SI ¹⁻²	I ¹⁻³
Flawless	Internally Flawless	Very Very Slightly Included	Very Slightly Included	Slightly Included	Included



IGI



May 12, 2026
IGI Report No LG800644595
HEART BRILLIANT
5.87 X 7.06 X 4.07 MM
Carat Weight **1.01 CARAT**
Color Grade **D**
Clarity Grade **VS 1**
Depth **57.6%**
Table **61%**
Girdle **Medium to Slightly Thick (Faceted)**
Culet **Pointed**
Polish **EXCELLENT**
Symmetry **VERY GOOD**
Fluorescence **NONE**
Inscription(s) **IGI LG800644595**
Comments: As Grown - No indication of post-growth treatment.
This Laboratory Grown Diamond was created by High Pressure High Temperature (HPHT) growth process. Type II