



ELECTRONIC COPY

LG800644535
Report verification at igi.org



May 25, 2026

IGI Report Number **LG800644535**

Description **LABORATORY GROWN DIAMOND**

Shape and Cutting Style **OLD EUROPEAN CUT**

Measurements **7.72 - 7.75 X 4.80 MM**

GRADING RESULTS

Carat Weight **1.81 CARAT**

Color Grade **D**

Clarity Grade **VS 1**

May 25, 2026

IGI Report Number **LG800644535**

Description **LABORATORY GROWN DIAMOND**

Shape and Cutting Style **OLD EUROPEAN CUT**

Measurements **7.72 - 7.75 X 4.80 MM**

GRADING RESULTS

Carat Weight **1.81 CARAT**

Color Grade **D**

Clarity Grade **VS 1**

ADDITIONAL GRADING INFORMATION

Polish **EXCELLENT**

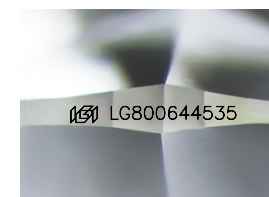
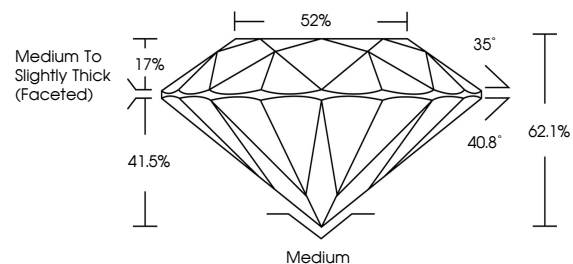
Symmetry **EXCELLENT**

Fluorescence **NONE**

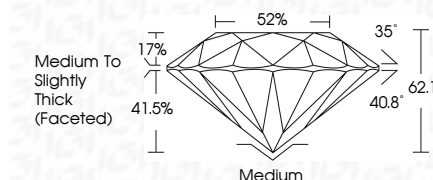
Inscription(s) **IGI LG800644535**

Comments: This Laboratory Grown Diamond was created by Chemical Vapor Deposition (CVD) growth process.
Type IIa

PROPORTIONS



Sample Image Used



COLOR

D E F G H I J Faint Very Light Light

CLARITY

| FL | IF | VS ¹⁻² | VS ¹⁻² | SI ¹⁻² | I ¹⁻³ |
|----------|---------------------|-----------------------------|------------------------|-------------------|------------------|
| Flawless | Internally Flawless | Very Very Slightly Included | Very Slightly Included | Slightly Included | Included |

ADDITIONAL GRADING INFORMATION

Polish **EXCELLENT**

Symmetry **EXCELLENT**

Fluorescence **NONE**

Inscription(s) **IGI LG800644535**

Comments: This Laboratory Grown Diamond was created by Chemical Vapor Deposition (CVD) growth process.
Type IIa



IGI



May 25, 2026
IGI Report No. LG800644535
OLD EUROPEAN CUT
7.72 - 7.75 X 4.80 MM
1.81 CARAT
Color Grade **D**
Clarity Grade **VS 1**
Depth **62.1%**
Table **52%**
Girdle **Medium to Slightly Thick (Faceted)**
Culet **Medium**
Polish **EXCELLENT**
Symmetry **EXCELLENT**
Fluorescence **NONE**
Inscription(s) **IGI LG800644535**

Comments: This Laboratory Grown Diamond was created by Chemical Vapor Deposition (CVD) growth process.
Type IIa