



May 11, 2026

IGI Report Number LG800643531

**ROUND BRILLIANT  
LABORATORY GROWN DIAMOND**  
6.05 - 6.09 X 3.76 MM

Carat Weight	0.85 CARAT
Color Grade	D
Clarity Grade	VVS 2
Cut Grade	IDEAL
Polish	EXCELLENT
Symmetry	EXCELLENT
Fluorescence	NONE
Inscription(s)	IGI LG800643531

Comments: This Laboratory Grown Diamond was created by Chemical Vapor Deposition (CVD) growth process. Type IIa

**LABORATORY GROWN DIAMOND REPORT**

May 11, 2026	
IGI Report Number	LG800643531
Description	LABORATORY GROWN DIAMOND
Shape and Cutting Style	ROUND BRILLIANT
Measurements	6.05 - 6.09 X 3.76 MM

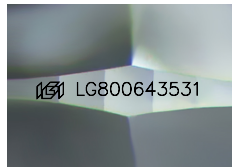
**GRADING RESULTS**

Carat Weight	0.85 CARAT
Color Grade	D
Clarity Grade	VVS 2
Cut Grade	IDEAL

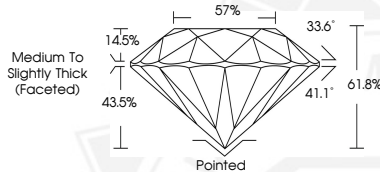
**ADDITIONAL GRADING INFORMATION**

Polish	EXCELLENT
Symmetry	EXCELLENT
Fluorescence	NONE
Inscription(s)	IGI LG800643531

Comments: This Laboratory Grown Diamond was created by Chemical Vapor Deposition (CVD) growth process. Type IIa



Sample Image Used



May 11, 2026

IGI Report Number LG800643531

**ROUND BRILLIANT  
LABORATORY GROWN DIAMOND**  
6.05 - 6.09 X 3.76 MM

Carat Weight	0.85 CARAT
Color Grade	D
Clarity Grade	VVS 2
Cut Grade	IDEAL
Polish	EXCELLENT
Symmetry	EXCELLENT
Fluorescence	NONE
Inscription(s)	IGI LG800643531

Comments: This Laboratory Grown Diamond was created by Chemical Vapor Deposition (CVD) growth process. Type IIa

THIS DOCUMENT WAS PRODUCED WITH THE FOLLOWING SECURITY MEASURES: SPECIAL DOCUMENT PAPER, INK SCREENS, WATERMARK, BACKGROUND DESIGNS, HOLOGRAM AND OTHER SECURITY FEATURES NOT LISTED AND DO EXCEED DOCUMENT SECURITY INDUSTRY GUIDELINES.