



ELECTRONIC COPY

LG800642496
Report verification at igi.org



May 20, 2026
IGI Report Number **LG800642496**
Description **LABORATORY GROWN DIAMOND**
Shape and Cutting Style **MODIFIED MARQUISE STEP CUT**
Measurements **14.37 X 7.28 X 4.36 MM**
GRADING RESULTS
Carat Weight **3.01 CARATS**
Color Grade **E**
Clarity Grade **VS 2**

LABORATORY GROWN DIAMOND REPORT

May 20, 2026
IGI Report Number **LG800642496**
Description **LABORATORY GROWN DIAMOND**
Shape and Cutting Style **MODIFIED MARQUISE STEP CUT**
Measurements **14.37 X 7.28 X 4.36 MM**

GRADING RESULTS

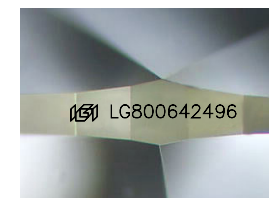
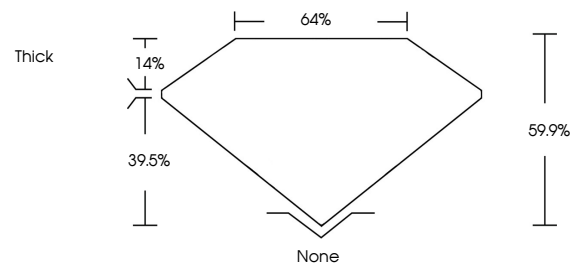
Carat Weight **3.01 CARATS**
Color Grade **E**
Clarity Grade **VS 2**

ADDITIONAL GRADING INFORMATION

Polish **EXCELLENT**
Symmetry **EXCELLENT**
Fluorescence **NONE**
Inscription(s) **IGI LG800642496**

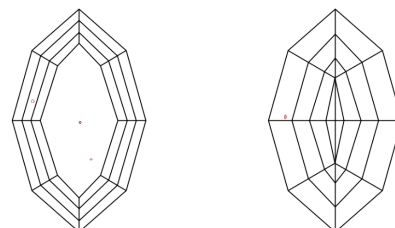
Comments: This Laboratory Grown Diamond was created by Chemical Vapor Deposition (CVD) growth process.
Type IIa

PROPORTIONS



Sample Image Used

CLARITY CHARACTERISTICS



KEY TO SYMBOLS

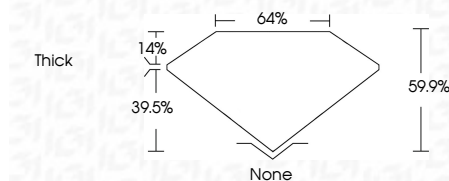
Red symbols indicate internal characteristics.
Green symbols indicate external characteristics.

COLOR

D E F G H I J Faint Very Light Light

CLARITY

FL	IF	VS ¹⁻²	VS ¹⁻²	SI ¹⁻²	I ¹⁻³
Flawless	Internally Flawless	Very Very Slightly Included	Very Slightly Included	Slightly Included	Included



ADDITIONAL GRADING INFORMATION

Polish **EXCELLENT**
Symmetry **EXCELLENT**
Fluorescence **NONE**
Inscription(s) **IGI LG800642496**
Comments: This Laboratory Grown Diamond was created by Chemical Vapor Deposition (CVD) growth process.
Type IIa



May 20, 2026
IGI Report No LG800642496
MODIFIED MARQUISE STEP CUT
14.37 X 7.28 X 4.36 MM
3.01 CARATS
E
VS 2
64%
39.5%
Thick
None
EXCELLENT
EXCELLENT
NONE
IGI LG800642496
Comments: This Laboratory Grown Diamond was created by Chemical Vapor Deposition (CVD) growth process.
Type IIa