



ELECTRONIC COPY

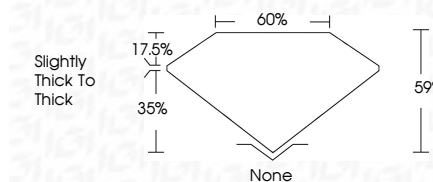
LG800642484
Report verification at igi.org



May 20, 2026
IGI Report Number **LG800642484**
Description **LABORATORY GROWN DIAMOND**
Shape and Cutting Style **MODIFIED PEAR STEP CUT**
Measurements **12.72 X 6.34 X 3.74 MM**

GRADING RESULTS

Carat Weight **2.04 CARATS**
Color Grade **E**
Clarity Grade **VS 1**

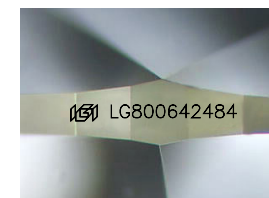


ADDITIONAL GRADING INFORMATION

Polish **EXCELLENT**
Symmetry **EXCELLENT**
Fluorescence **NONE**
Inscription(s) **(IGI) LG800642484**
Comments: This Laboratory Grown Diamond was created by Chemical Vapor Deposition (CVD) growth process. Type IIa

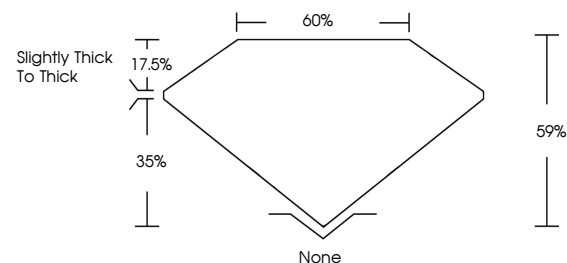


May 20, 2026
IGI Report No LG800642484
MODIFIED PEAR STEP CUT
12.72 X 6.34 X 3.74 MM
2.04 CARATS
E
VS 1
EXCELLENT
EXCELLENT
NONE
(IGI) LG800642484
None
EXCELLENT
EXCELLENT
NONE
(IGI) LG800642484
Comments: This Laboratory Grown Diamond was created by Chemical Vapor Deposition (CVD) growth process. Type IIa

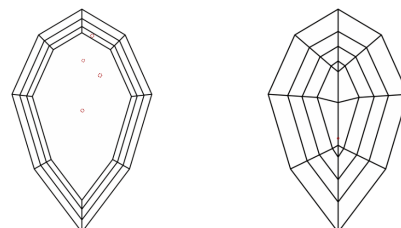


Sample Image Used

PROPORTIONS



CLARITY CHARACTERISTICS



KEY TO SYMBOLS

Red symbols indicate internal characteristics.
Green symbols indicate external characteristics.

COLOR

D E F G H I J Faint Very Light Light

CLARITY

| FL | IF | VS ¹⁻² | VS ¹⁻² | SI ¹⁻² | I ¹⁻³ |
|----------|---------------------|-----------------------------|------------------------|-------------------|------------------|
| Flawless | Internally Flawless | Very Very Slightly Included | Very Slightly Included | Slightly Included | Included |

