



ELECTRONIC COPY

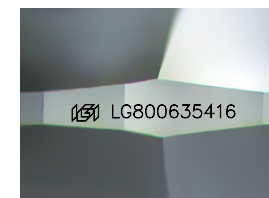
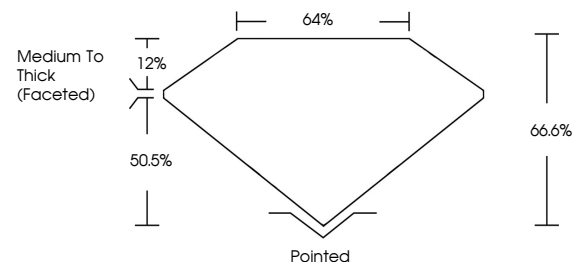
LG800635416 Report verification at igi.org



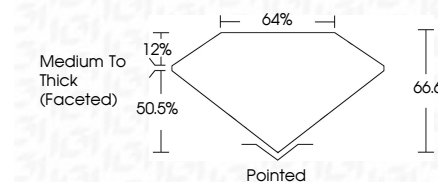
May 27, 2026 IGI Report Number LG800635416 Description LABORATORY GROWN DIAMOND Shape and Cutting Style CUSHION MODIFIED BRILLIANT Measurements 9.61 X 6.94 X 4.62 MM GRADING RESULTS Carat Weight 2.55 CARATS Color Grade D Clarity Grade VVS 1

May 27, 2026 IGI Report Number LG800635416 Description LABORATORY GROWN DIAMOND Shape and Cutting Style CUSHION MODIFIED BRILLIANT Measurements 9.61 X 6.94 X 4.62 MM

PROPORTIONS



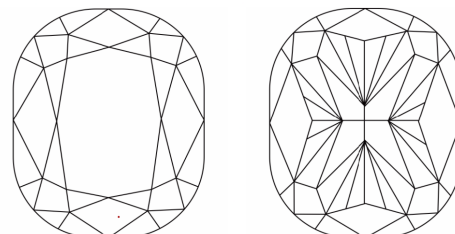
Sample Image Used



GRADING RESULTS

Carat Weight 2.55 CARATS Color Grade D Clarity Grade VVS 1

CLARITY CHARACTERISTICS



KEY TO SYMBOLS

Red symbols indicate internal characteristics. Green symbols indicate external characteristics.

COLOR

D E F G H I J Faint Very Light Light

CLARITY

FL IF VVS 1-2 VS 1-2 SI 1-2 I 1-3 Flawless Internally Flawless Very Very Slightly Included Very Slightly Included Slightly Included Included

ADDITIONAL GRADING INFORMATION

Polish EXCELLENT Symmetry EXCELLENT Fluorescence NONE Inscription(s) LG800635416 Comments: As Grown - No indication of post-growth treatment. This Laboratory Grown Diamond was created by High Pressure High Temperature (HPHT) growth process. Type II

ADDITIONAL GRADING INFORMATION

Polish EXCELLENT Symmetry EXCELLENT Fluorescence NONE Inscription(s) LG800635416

Comments: As Grown - No indication of post-growth treatment. This Laboratory Grown Diamond was created by High Pressure High Temperature (HPHT) growth process. Type II



May 27, 2026 IGI Report No LG800635416 CUSHION MODIFIED BRILLIANT 9.61 X 6.94 X 4.62 MM 2.55 CARATS D VVS 1 66.6% 50.5% Medium To Thick (Faceted) Pointed EXCELLENT EXCELLENT NONE NONE LG800635416

Comments: As Grown - No indication of post-growth treatment. This Laboratory Grown Diamond was created by High Pressure High Temperature (HPHT) growth process. Type II