



ELECTRONIC COPY

LG800634984
Report verification at igi.org



May 26, 2026
IGI Report Number **LG800634984**
Description **LABORATORY GROWN DIAMOND**
Shape and Cutting Style **HEART BRILLIANT**
Measurements **9.11 X 10.21 X 5.76 MM**
GRADING RESULTS
Carat Weight **3.02 CARATS**
Color Grade **D**
Clarity Grade **FLAWLESS**
Cut Grade **EXCELLENT**

May 26, 2026
IGI Report Number **LG800634984**
Description **LABORATORY GROWN DIAMOND**
Shape and Cutting Style **HEART BRILLIANT**
Measurements **9.11 X 10.21 X 5.76 MM**

GRADING RESULTS

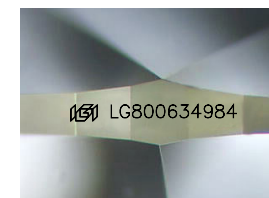
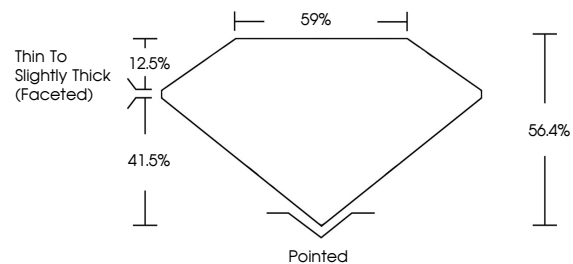
Carat Weight **3.02 CARATS**
Color Grade **D**
Clarity Grade **FLAWLESS**
Cut Grade **EXCELLENT**

ADDITIONAL GRADING INFORMATION

Polish **EXCELLENT**
Symmetry **EXCELLENT**
Fluorescence **NONE**
Inscription(s) **LG800634984**

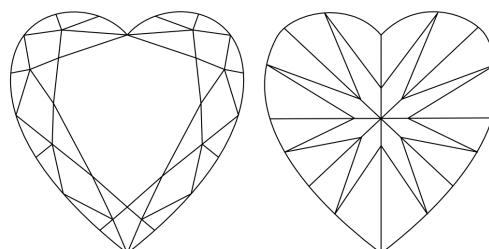
Comments: As Grown - No indication of post-growth treatment.
This Laboratory Grown Diamond was created by High Pressure High Temperature (HPHT) growth process.
Type II

PROPORTIONS



Sample Image Used

CLARITY CHARACTERISTICS



KEY TO SYMBOLS

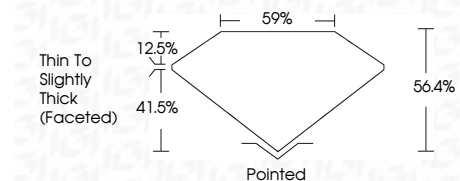
Red symbols indicate internal characteristics.
Green symbols indicate external characteristics.

COLOR

D E F G H I J Faint Very Light Light

CLARITY

| FL | IF | VS ¹⁻² | VS ¹⁻² | SI ¹⁻² | I ¹⁻³ |
|----------|---------------------|-----------------------------|------------------------|-------------------|------------------|
| Flawless | Internally Flawless | Very Very Slightly Included | Very Slightly Included | Slightly Included | Included |



ADDITIONAL GRADING INFORMATION

Polish **EXCELLENT**
Symmetry **EXCELLENT**
Fluorescence **NONE**
Inscription(s) **LG800634984**
Comments: As Grown - No indication of post-growth treatment.
This Laboratory Grown Diamond was created by High Pressure High Temperature (HPHT) growth process.
Type II



May 26, 2026
IGI Report No LG800634984
HEART BRILLIANT
9.11 X 10.21 X 5.76 MM
3.02 CARATS
D
FLAWLESS
EXCELLENT
56.4%
59%
Thin To Slightly Thick (Faceted)
Pointed
EXCELLENT
EXCELLENT
NONE
IGI LG800634984
Comments: As Grown - No indication of post-growth treatment.
This Laboratory Grown Diamond was created by High Pressure High Temperature (HPHT) growth process.
Type II