



ELECTRONIC COPY

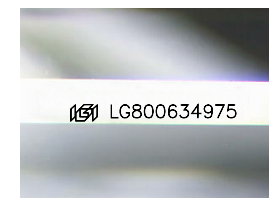
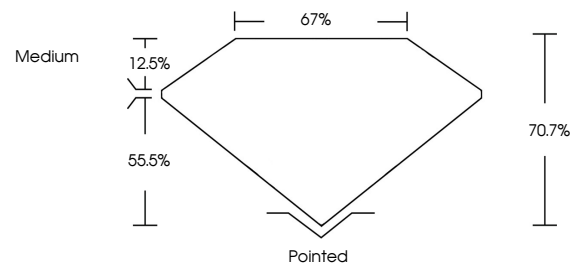
LG800634975
Report verification at igi.org



May 28, 2026
IGI Report Number **LG800634975**
Description **LABORATORY GROWN DIAMOND**
Shape and Cutting Style **PRINCESS CUT**
Measurements **7.36 X 7.30 X 5.16 MM**
GRADING RESULTS
Carat Weight **2.41 CARATS**
Color Grade **D**
Clarity Grade **FLAWLESS**
Cut Grade **EXCELLENT**

May 28, 2026
IGI Report Number **LG800634975**
Description **LABORATORY GROWN DIAMOND**
Shape and Cutting Style **PRINCESS CUT**
Measurements **7.36 X 7.30 X 5.16 MM**

PROPORTIONS

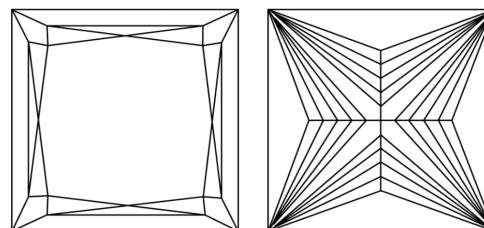


Sample Image Used

GRADING RESULTS

Carat Weight **2.41 CARATS**
Color Grade **D**
Clarity Grade **FLAWLESS**
Cut Grade **EXCELLENT**

CLARITY CHARACTERISTICS



KEY TO SYMBOLS

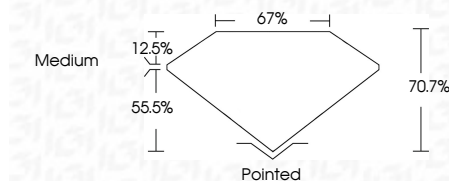
Red symbols indicate internal characteristics.
Green symbols indicate external characteristics.

COLOR

D E F G H I J Faint Very Light Light

CLARITY

FL	IF	VS ¹⁻²	VS ¹⁻²	SI ¹⁻²	I ¹⁻³
Flawless	Internally Flawless	Very Very Slightly Included	Very Slightly Included	Slightly Included	Included



ADDITIONAL GRADING INFORMATION

Polish **EXCELLENT**
Symmetry **EXCELLENT**
Fluorescence **NONE**
Inscription(s) **IGI LG800634975**
Comments: As Grown - No indication of post-growth treatment.
This Laboratory Grown Diamond was created by High Pressure High Temperature (HPHT) growth process.
Type II

ADDITIONAL GRADING INFORMATION

Polish **EXCELLENT**
Symmetry **EXCELLENT**
Fluorescence **NONE**
Inscription(s) **IGI LG800634975**

Comments: As Grown - No indication of post-growth treatment.
This Laboratory Grown Diamond was created by High Pressure High Temperature (HPHT) growth process.
Type II



May 28, 2026
IGI Report No. **LG800634975**
PRINCESS CUT
2.41 CARATS
Color Grade **D**
Clarity Grade **FLAWLESS**
Depth **70.7%**
Table **67%**
Girdle **Medium**
Culet **Pointed**
Polish **EXCELLENT**
Symmetry **EXCELLENT**
Fluorescence **NONE**
Inscription(s) **IGI LG800634975**
Comments: As Grown - No indication of post-growth treatment.
This Laboratory Grown Diamond was created by High Pressure High Temperature (HPHT) growth process.
Type II