



**ELECTRONIC COPY**

LG800634588  
Report verification at [igi.org](http://igi.org)



May 26, 2026  
IGI Report Number **LG800634588**

Description **LABORATORY GROWN DIAMOND**

Shape and Cutting Style **PEAR MODIFIED BRILLIANT**

Measurements **12.47 X 7.32 X 4.56 MM**

**GRADING RESULTS**

Carat Weight **3.05 CARATS**

Color Grade **FANCY LIGHT YELLOW**

Clarity Grade **VS 1**

May 26, 2026  
IGI Report Number **LG800634588**  
Description **LABORATORY GROWN DIAMOND**  
Shape and Cutting Style **PEAR MODIFIED BRILLIANT**  
Measurements **12.47 X 7.32 X 4.56 MM**

**GRADING RESULTS**

Carat Weight **3.05 CARATS**

Color Grade **FANCY LIGHT YELLOW**

Clarity Grade **VS 1**

**ADDITIONAL GRADING INFORMATION**

Polish **EXCELLENT**

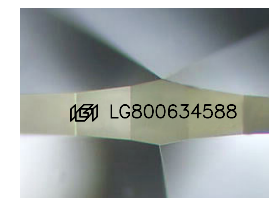
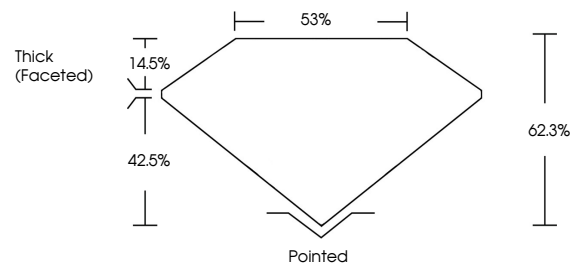
Symmetry **EXCELLENT**

Fluorescence **NONE**

Inscription(s) **IGI LG800634588**

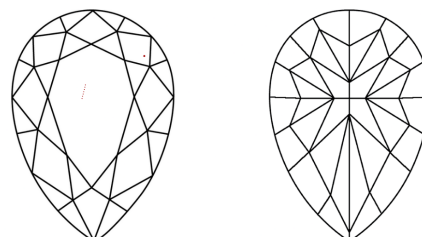
Comments: This Laboratory Grown Diamond was created by Chemical Vapor Deposition (CVD) growth process.

**PROPORTIONS**



Sample Image Used

**CLARITY CHARACTERISTICS**



**KEY TO SYMBOLS**

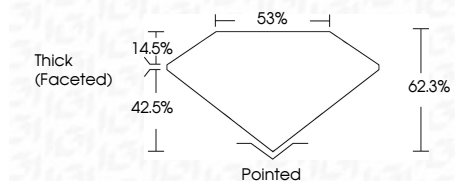
Red symbols indicate internal characteristics.  
Green symbols indicate external characteristics.

**COLOR**

D E F G H I J Faint Very Light Light

**CLARITY**

FL	IF	VS <sup>1-2</sup>	VS <sup>1-2</sup>	SI <sup>1-2</sup>	I <sup>1-3</sup>
Flawless	Internally Flawless	Very Very Slightly Included	Very Slightly Included	Slightly Included	Included



**ADDITIONAL GRADING INFORMATION**

Polish **EXCELLENT**

Symmetry **EXCELLENT**

Fluorescence **NONE**

Inscription(s) **IGI LG800634588**

Comments: This Laboratory Grown Diamond was created by Chemical Vapor Deposition (CVD) growth process.



May 26, 2026  
IGI Report No. LG800634588  
**PEAR MODIFIED BRILLIANT**  
12.47 X 7.32 X 4.56 MM  
3.05 CARATS  
FANCY LIGHT YELLOW  
VS 1  
62.3%  
53%  
Thick (Faceted)  
Pointed  
EXCELLENT  
EXCELLENT  
NONE  
IGI LG800634588  
Comments: This Laboratory Grown Diamond was created by Chemical Vapor Deposition (CVD) growth process.