



ELECTRONIC COPY

LG800634296
Report verification at igi.org



May 26, 2026
IGI Report Number **LG800634296**
Description **LABORATORY GROWN DIAMOND**
Shape and Cutting Style **CUSHION MODIFIED BRILLIANT**
Measurements **8.07 X 5.74 X 3.95 MM**
GRADING RESULTS
Carat Weight **1.62 CARAT**
Color Grade **FANCY LIGHT BROWN**
Clarity Grade **VS 2**

LABORATORY GROWN DIAMOND REPORT

May 26, 2026
IGI Report Number **LG800634296**
Description **LABORATORY GROWN DIAMOND**
Shape and Cutting Style **CUSHION MODIFIED BRILLIANT**
Measurements **8.07 X 5.74 X 3.95 MM**

GRADING RESULTS

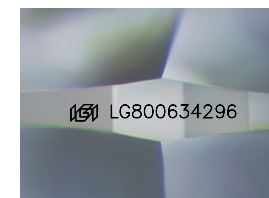
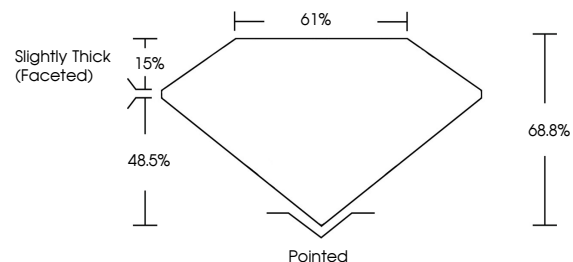
Carat Weight **1.62 CARAT**
Color Grade **FANCY LIGHT BROWN**
Clarity Grade **VS 2**

ADDITIONAL GRADING INFORMATION

Polish **EXCELLENT**
Symmetry **EXCELLENT**
Fluorescence **NONE**
Inscription(s) **IGI LG800634296**

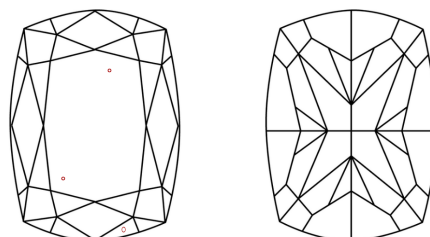
Comments: This Laboratory Grown Diamond was created by Chemical Vapor Deposition (CVD) growth process.

PROPORTIONS



Sample Image Used

CLARITY CHARACTERISTICS



KEY TO SYMBOLS

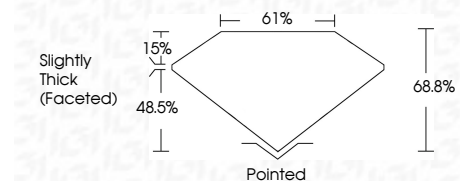
Red symbols indicate internal characteristics.
Green symbols indicate external characteristics.

COLOR

D E F G H I J Faint Very Light Light

CLARITY

FL	IF	VS ¹⁻²	VS ¹⁻²	SI ¹⁻²	I ¹⁻³
Flawless	Internally Flawless	Very Very Slightly Included	Very Slightly Included	Slightly Included	Included



ADDITIONAL GRADING INFORMATION

Polish **EXCELLENT**
Symmetry **EXCELLENT**
Fluorescence **NONE**
Inscription(s) **IGI LG800634296**
Comments: This Laboratory Grown Diamond was created by Chemical Vapor Deposition (CVD) growth process.



May 26, 2026
IGI Report No **LG800634296**
CUSHION MODIFIED BRILLIANT
8.07 X 5.74 X 3.95 MM
Carat Weight **1.62 CARAT**
Color Grade **FANCY LIGHT BROWN**
Clarity Grade **VS 2**
Depth **48.5%**
Table **61%**
Girdle **Slightly Thick (Faceted)**
Culet **Pointed**
Polish **EXCELLENT**
Symmetry **EXCELLENT**
Fluorescence **NONE**
Inscription(s) **IGI LG800634296**
Comments: This Laboratory Grown Diamond was created by Chemical Vapor Deposition (CVD) growth process.