



ELECTRONIC COPY

LG800634248
Report verification at igi.org



May 26, 2026
IGI Report Number **LG800634248**
Description **LABORATORY GROWN DIAMOND**
Shape and Cutting Style **SQUARE CUSHION MODIFIED BRILLIANT**
Measurements **6.95 X 6.71 X 4.60 MM**
GRADING RESULTS
Carat Weight **2.03 CARATS**
Color Grade **FANCY INTENSE PINK**
Clarity Grade **VVS 2**

LABORATORY GROWN DIAMOND REPORT

May 26, 2026
IGI Report Number **LG800634248**
Description **LABORATORY GROWN DIAMOND**
Shape and Cutting Style **SQUARE CUSHION MODIFIED BRILLIANT**
Measurements **6.95 X 6.71 X 4.60 MM**

GRADING RESULTS

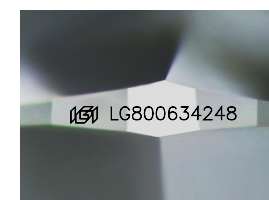
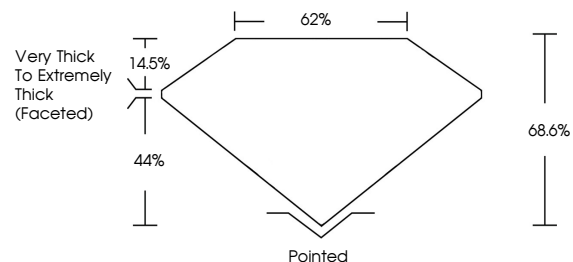
Carat Weight **2.03 CARATS**
Color Grade **FANCY INTENSE PINK**
Clarity Grade **VVS 2**

ADDITIONAL GRADING INFORMATION

Polish **EXCELLENT**
Symmetry **EXCELLENT**
Fluorescence **SLIGHT**
Inscription(s) **IGI LG800634248**

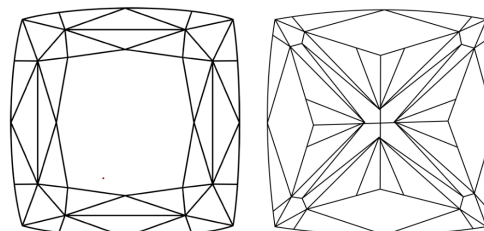
Comments: This Laboratory Grown Diamond was created by Chemical Vapor Deposition (CVD) growth process.
Indications of post-growth treatment.

PROPORTIONS



Sample Image Used

CLARITY CHARACTERISTICS



KEY TO SYMBOLS

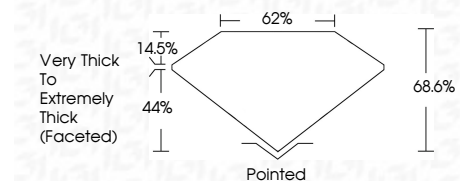
Red symbols indicate internal characteristics.
Green symbols indicate external characteristics.

COLOR

D E F G H I J Faint Very Light Light

CLARITY

FL	IF	VVS ¹⁻²	VS ¹⁻²	SI ¹⁻²	I ¹⁻³
Flawless	Internally Flawless	Very Very Slightly Included	Very Slightly Included	Slightly Included	Included



ADDITIONAL GRADING INFORMATION

Polish **EXCELLENT**
Symmetry **EXCELLENT**
Fluorescence **SLIGHT**
Inscription(s) **IGI LG800634248**
Comments: This Laboratory Grown Diamond was created by Chemical Vapor Deposition (CVD) growth process.
Indications of post-growth treatment.



May 26, 2026
IGI Report No LG800634248
SQUARE CUSHION MODIFIED BRILLIANT
6.95 X 6.71 X 4.60 MM
2.03 CARATS
FANCY INTENSE PINK
VVS 2
68.6%
62%
Very Thick to Extremely Thick (Faceted)
Pointed
EXCELLENT
EXCELLENT
SLIGHT
IGI LG800634248

Comments: This Laboratory Grown Diamond was created by Chemical Vapor Deposition (CVD) growth process.
Indications of post-growth treatment.