



ELECTRONIC COPY

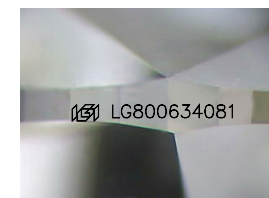
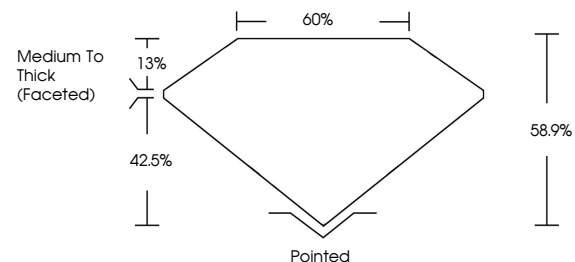
LG800634081
Report verification at igi.org



May 26, 2026
IGI Report Number **LG800634081**
Description **LABORATORY GROWN DIAMOND**
Shape and Cutting Style **HEART BRILLIANT**
Measurements **8.53 X 9.68 X 5.70 MM**
GRADING RESULTS
Carat Weight **2.70 CARATS**
Color Grade **D**
Clarity Grade **FLAWLESS**

May 26, 2026
IGI Report Number **LG800634081**
Description **LABORATORY GROWN DIAMOND**
Shape and Cutting Style **HEART BRILLIANT**
Measurements **8.53 X 9.68 X 5.70 MM**

PROPORTIONS

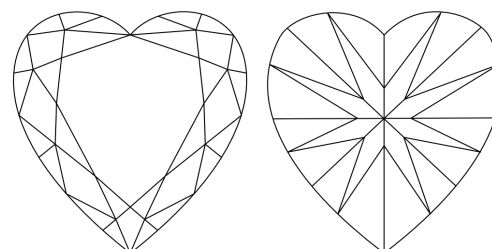


Sample Image Used

GRADING RESULTS

Carat Weight **2.70 CARATS**
Color Grade **D**
Clarity Grade **FLAWLESS**

CLARITY CHARACTERISTICS



KEY TO SYMBOLS

Red symbols indicate internal characteristics.
Green symbols indicate external characteristics.

ADDITIONAL GRADING INFORMATION

Polish **EXCELLENT**
Symmetry **EXCELLENT**
Fluorescence **NONE**
Inscription(s) **IGI LG800634081**

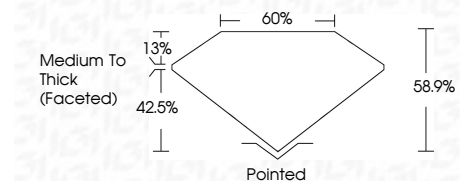
Comments: This Laboratory Grown Diamond was created by High Pressure High Temperature (HPHT) growth process.
Type II

COLOR

D E F G H I J Faint Very Light Light

CLARITY

FL	IF	VS ¹⁻²	VS ¹⁻²	SI ¹⁻²	I ¹⁻³
Flawless	Internally Flawless	Very Very Slightly Included	Very Slightly Included	Slightly Included	Included



ADDITIONAL GRADING INFORMATION

Polish **EXCELLENT**
Symmetry **EXCELLENT**
Fluorescence **NONE**
Inscription(s) **IGI LG800634081**
Comments: This Laboratory Grown Diamond was created by High Pressure High Temperature (HPHT) growth process.
Type II



May 26, 2026
IGI Report No LG800634081
HEART BRILLIANT
8.53 X 9.68 X 5.70 MM
Carat Weight **2.70 CARATS**
Color Grade **D**
Clarity Grade **FLAWLESS**
Table **68.9%**
Girdle **65%**
Medium To Thick (Faceted)
Culet **Pointed**
Polish **EXCELLENT**
Symmetry **EXCELLENT**
Fluorescence **NONE**
Inscription(s) **IGI LG800634081**
Comments: This Laboratory Grown Diamond was created by High Pressure High Temperature (HPHT) growth process.
Type II