



**ELECTRONIC COPY**

LG800632825  
Report verification at [igi.org](http://igi.org)



May 26, 2026

IGI Report Number **LG800632825**

Description **LABORATORY GROWN DIAMOND**

Shape and Cutting Style **CUT CORNERED  
RECTANGULAR MODIFIED  
BRILLIANT**

Measurements **9.01 X 6.35 X 4.18 MM**

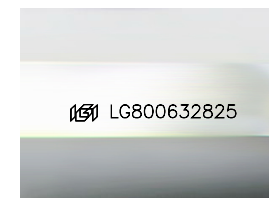
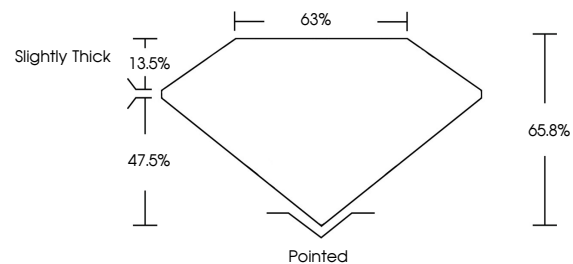
**GRADING RESULTS**

Carat Weight **2.09 CARATS**

Color Grade **E**

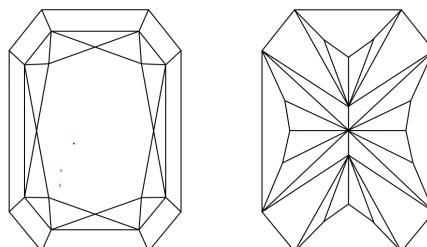
Clarity Grade **VVS 2**

**PROPORTIONS**



Sample Image Used

**CLARITY CHARACTERISTICS**



**KEY TO SYMBOLS**

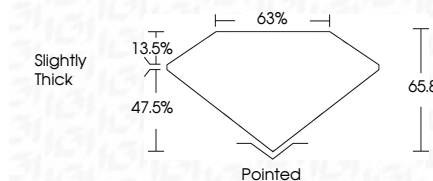
Red symbols indicate internal characteristics.  
Green symbols indicate external characteristics.

**COLOR**

D E F G H I J Faint Very Light Light

**CLARITY**

FL	IF	VVS <sup>1-2</sup>	VS <sup>1-2</sup>	SI <sup>1-2</sup>	I <sup>1-3</sup>
Flawless	Internally Flawless	Very Very Slightly Included	Very Slightly Included	Slightly Included	Included



**ADDITIONAL GRADING INFORMATION**

Polish **EXCELLENT**

Symmetry **EXCELLENT**

Fluorescence **NONE**

Inscription(s) **IGI LG800632825**

Comments: This Laboratory Grown Diamond was created by Chemical Vapor Deposition (CVD) growth process. Type IIa



**IGI**



May 26, 2026  
IGI Report No. LG800632825  
CUT CORNERED RECT. MODIFIED BRILLIANT

9.01 X 6.35 X 4.18 MM

2.09 CARATS  
E

VVS 2  
65.8%  
63%

Slightly Thick

Pointed  
EXCELLENT  
EXCELLENT  
NONE  
IGI LG800632825

Comments: This Laboratory Grown Diamond was created by Chemical Vapor Deposition (CVD) growth process. Type IIa