



**ELECTRONIC COPY**

LG800630541  
Report verification at igi.org



May 29, 2026

IGI Report Number **LG800630541**

Description **LABORATORY GROWN DIAMOND**

Shape and Cutting Style **OVAL BRILLIANT**

Measurements **11.99 X 8.06 X 4.91 MM**

**GRADING RESULTS**

Carat Weight **3.08 CARATS**

Color Grade **FANCY VIVID PINK**

Clarity Grade **VS 1**

May 29, 2026  
IGI Report Number **LG800630541**  
Description **LABORATORY GROWN DIAMOND**  
Shape and Cutting Style **OVAL BRILLIANT**  
Measurements **11.99 X 8.06 X 4.91 MM**

**GRADING RESULTS**

Carat Weight **3.08 CARATS**

Color Grade **FANCY VIVID PINK**

Clarity Grade **VS 1**

**ADDITIONAL GRADING INFORMATION**

Polish **EXCELLENT**

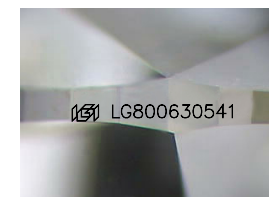
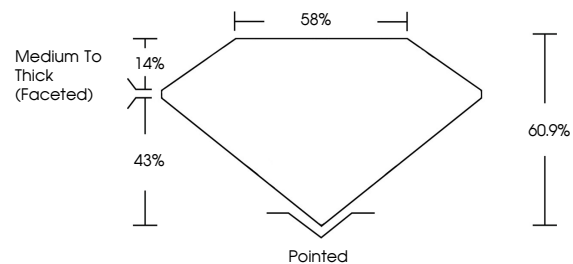
Symmetry **EXCELLENT**

Fluorescence **SLIGHT**

Inscription(s) **LG800630541**

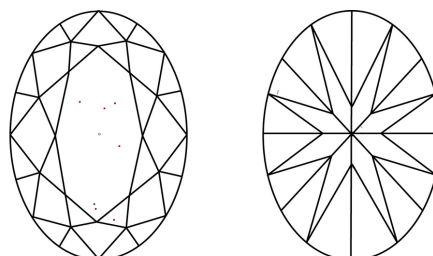
Comments: This Laboratory Grown Diamond was created by Chemical Vapor Deposition (CVD) growth process.  
Indications of post-growth treatment.

**PROPORTIONS**



Sample Image Used

**CLARITY CHARACTERISTICS**



**KEY TO SYMBOLS**

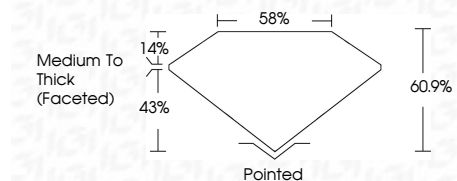
Red symbols indicate internal characteristics.  
Green symbols indicate external characteristics.

**COLOR**

D E F G H I J Faint Very Light Light

**CLARITY**

FL	IF	VS <sup>1-2</sup>	VS <sup>1-2</sup>	SI <sup>1-2</sup>	I <sup>1-3</sup>
Flawless	Internally Flawless	Very Very Slightly Included	Very Slightly Included	Slightly Included	Included



**ADDITIONAL GRADING INFORMATION**

Polish **EXCELLENT**

Symmetry **EXCELLENT**

Fluorescence **SLIGHT**

Inscription(s) **LG800630541**

Comments: This Laboratory Grown Diamond was created by Chemical Vapor Deposition (CVD) growth process.  
Indications of post-growth treatment.



**IGI**



May 29, 2026  
IGI Report No LG800630541  
OVAL BRILLIANT  
3.08 CARATS  
FANCY VIVID PINK  
VS 1  
60.9%  
85%  
Medium To Thick (Faceted)  
Pointed  
EXCELLENT  
EXCELLENT  
SLIGHT  
IGI LG800630541  
Comments: This Laboratory Grown Diamond was created by Chemical Vapor Deposition (CVD) growth process.  
Indications of post-growth treatment.