



ELECTRONIC COPY

LG800630530
Report verification at igi.org



May 29, 2026

IGI Report Number **LG800630530**

Description **LABORATORY GROWN DIAMOND**

Shape and Cutting Style **EMERALD CUT**

Measurements **10.15 X 6.51 X 4.48 MM**

GRADING RESULTS

Carat Weight **3.01 CARATS**

Color Grade **FANCY VIVID PINK**

Clarity Grade **VVS 2**

LABORATORY GROWN DIAMOND REPORT

May 29, 2026

IGI Report Number **LG800630530**

Description **LABORATORY GROWN DIAMOND**

Shape and Cutting Style **EMERALD CUT**

Measurements **10.15 X 6.51 X 4.48 MM**

GRADING RESULTS

Carat Weight **3.01 CARATS**

Color Grade **FANCY VIVID PINK**

Clarity Grade **VVS 2**

ADDITIONAL GRADING INFORMATION

Polish **EXCELLENT**

Symmetry **EXCELLENT**

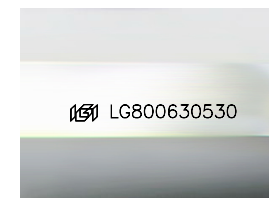
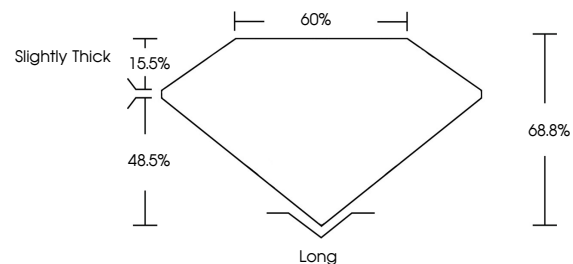
Fluorescence **SLIGHT**

Inscription(s) **LG800630530**

Comments: This Laboratory Grown Diamond was created by Chemical Vapor Deposition (CVD) growth process.

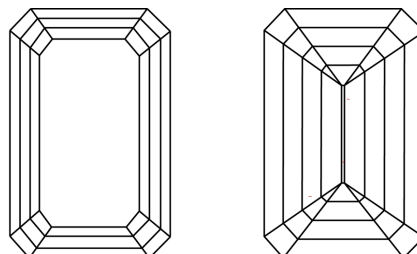
Indications of post-growth treatment.

PROPORTIONS



Sample Image Used

CLARITY CHARACTERISTICS



KEY TO SYMBOLS

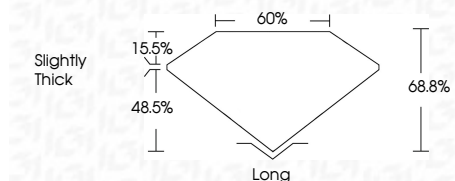
Red symbols indicate internal characteristics.
Green symbols indicate external characteristics.

COLOR

D E F G H I J Faint Very Light Light

CLARITY

FL	IF	VVS ¹⁻²	VS ¹⁻²	SI ¹⁻²	I ¹⁻³
Flawless	Internally Flawless	Very Very Slightly Included	Very Slightly Included	Slightly Included	Included



ADDITIONAL GRADING INFORMATION

Polish **EXCELLENT**

Symmetry **EXCELLENT**

Fluorescence **SLIGHT**

Inscription(s) **LG800630530**

Comments: This Laboratory Grown Diamond was created by Chemical Vapor Deposition (CVD) growth process. Indications of post-growth treatment.



IGI



May 29, 2026
IGI Report No. LG800630530
EMERALD CUT

3.01 CARATS
Carat Weight
FANCY VIVID PINK
Color Grade

VVS 2
Clarity Grade

68.8%
Table

60%
Girdle

Slightly Thick

Long
EXCELLENT
EXCELLENT
SLIGHT
Inscription(s)
 LG800630530

Comments: This Laboratory Grown Diamond was created by Chemical Vapor Deposition (CVD) growth process. Indications of post-growth treatment.