



**INTERNATIONAL
GEMOLOGICAL
INSTITUTE**

ELECTRONIC COPY

LABORATORY GROWN DIAMOND REPORT

June 2, 2026
IGI Report Number **LG800630491**
Description **LABORATORY GROWN DIAMOND**
Shape and Cutting Style **ROUND BRILLIANT**
Measurements **6.13 - 6.16 X 3.71 MM**

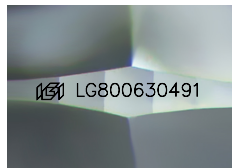
GRADING RESULTS

Carat Weight **0.85 CARAT**
Color Grade **FANCY INTENSE PINK**
Clarity Grade **VS 1**
Cut Grade **EXCELLENT**

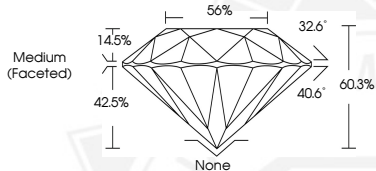
ADDITIONAL GRADING INFORMATION

Polish **EXCELLENT**
Symmetry **EXCELLENT**
Fluorescence **SLIGHT**
Inscription(s) **IGI LG800630491**

Comments: This Laboratory Grown Diamond was created by Chemical Vapor Deposition (CVD) growth process. Indications of post-growth treatment.



Sample Image Used



June 2, 2026
IGI Report Number **LG800630491**
ROUND BRILLIANT
LABORATORY GROWN DIAMOND
6.13 - 6.16 X 3.71 MM
Carat Weight **0.85 CARAT**
Color Grade **FANCY INTENSE PINK**
Clarity Grade **VS 1**
Cut Grade **EXCELLENT**
Polish **EXCELLENT**
Symmetry **EXCELLENT**
Fluorescence **SLIGHT**
Inscription(s) **IGI LG800630491**

Comments: This Laboratory Grown Diamond was created by Chemical Vapor Deposition (CVD) growth process. Indications of post-growth treatment.



June 2, 2026
IGI Report Number **LG800630491**
ROUND BRILLIANT
LABORATORY GROWN DIAMOND
6.13 - 6.16 X 3.71 MM
Carat Weight **0.85 CARAT**
Color Grade **FANCY INTENSE PINK**
Clarity Grade **VS 1**
Cut Grade **EXCELLENT**
Polish **EXCELLENT**
Symmetry **EXCELLENT**
Fluorescence **SLIGHT**
Inscription(s) **IGI LG800630491**

Comments: This Laboratory Grown Diamond was created by Chemical Vapor Deposition (CVD) growth process. Indications of post-growth treatment.

THIS DOCUMENT WAS PRODUCED WITH THE FOLLOWING SECURITY MEASURES: SPECIAL DOCUMENT PAPER, INK SCREENS, WATERMARK, BACKGROUND DESIGNS, HOLOGRAM AND OTHER SECURITY FEATURES NOT LISTED AND DO EXCEED DOCUMENT SECURITY INDUSTRY GUIDELINES.

For terms & conditions and to verify this report, please visit www.igi.org