



ELECTRONIC COPY

LG800621441
Report verification at igi.org



June 9, 2026

IGI Report Number **LG800621441**

Description **LABORATORY GROWN DIAMOND**

Shape and Cutting Style **EMERALD CUT**

Measurements **7.78 X 5.38 X 3.71 MM**

GRADING RESULTS

Carat Weight **1.51 CARAT**

Color Grade **FANCY VIVID GREEN**

Clarity Grade **VVS 1**

June 9, 2026
IGI Report Number **LG800621441**
Description **LABORATORY GROWN DIAMOND**
Shape and Cutting Style **EMERALD CUT**
Measurements **7.78 X 5.38 X 3.71 MM**

GRADING RESULTS

Carat Weight **1.51 CARAT**

Color Grade **FANCY VIVID GREEN**

Clarity Grade **VVS 1**

ADDITIONAL GRADING INFORMATION

Polish **EXCELLENT**

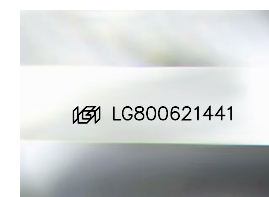
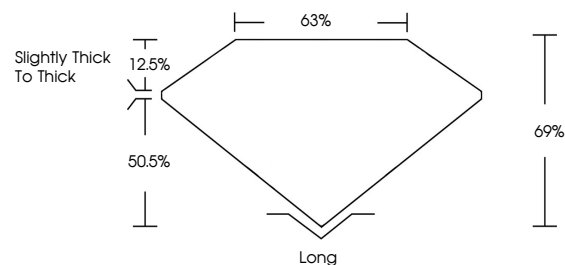
Symmetry **EXCELLENT**

Fluorescence **NONE**

Inscription(s) **IGI LG800621441**

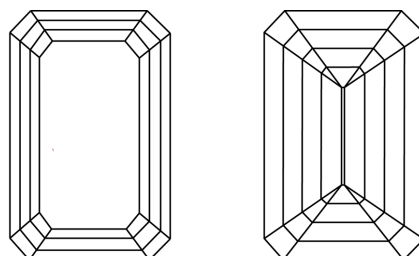
Comments: This Laboratory Grown Diamond was created by Chemical Vapor Deposition (CVD) growth process.
Indications of post-growth treatment.

PROPORTIONS



Sample Image Used

CLARITY CHARACTERISTICS



KEY TO SYMBOLS

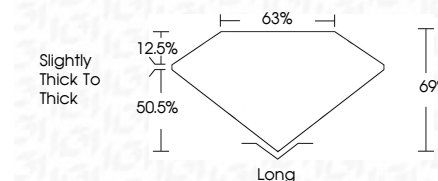
Red symbols indicate internal characteristics.
Green symbols indicate external characteristics.

COLOR

D E F G H I J Faint Very Light Light

CLARITY

| FL | IF | VVS ¹⁻² | VS ¹⁻² | SI ¹⁻² | I ¹⁻³ |
|----------|---------------------|-----------------------------|------------------------|-------------------|------------------|
| Flawless | Internally Flawless | Very Very Slightly Included | Very Slightly Included | Slightly Included | Included |



ADDITIONAL GRADING INFORMATION

Polish **EXCELLENT**

Symmetry **EXCELLENT**

Fluorescence **NONE**

Inscription(s) **IGI LG800621441**

Comments: This Laboratory Grown Diamond was created by Chemical Vapor Deposition (CVD) growth process.
Indications of post-growth treatment.



IGI



June 9, 2026
IGI Report No. **LG800621441**
EMERALD CUT

1.51 CARAT
Carat Weight
FANCY VIVID GREEN
Color Grade
VVS 1
Clarity Grade
69%
Depth
63%
Table
Slightly thick to thick
Girdle

Long
Culet
EXCELLENT
Polish
EXCELLENT
Symmetry
NONE
Fluorescence
IGI LG800621441
Inscription(s)

Comments: This Laboratory Grown Diamond was created by Chemical Vapor Deposition (CVD) growth process.
Indications of post-growth treatment.