



ELECTRONIC COPY

LG800620154 Report verification at igi.org



June 8, 2026 IGI Report Number LG800620154 Description LABORATORY GROWN DIAMOND Shape and Cutting Style ROUND BRILLIANT Measurements 8.08 - 8.12 X 5.08 MM GRADING RESULTS Carat Weight 2.05 CARATS Color Grade E Clarity Grade VVS 2 Cut Grade EXCELLENT

June 8, 2026 IGI Report Number LG800620154 Description LABORATORY GROWN DIAMOND Shape and Cutting Style ROUND BRILLIANT Measurements 8.08 - 8.12 X 5.08 MM

GRADING RESULTS

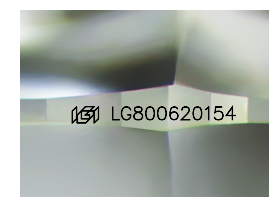
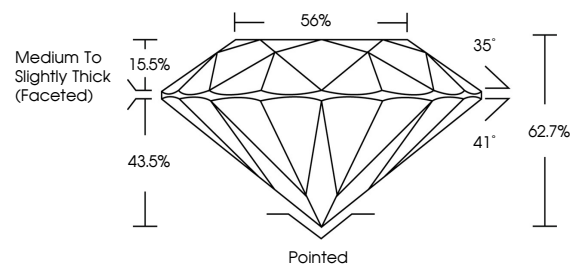
Carat Weight 2.05 CARATS Color Grade E Clarity Grade VVS 2 Cut Grade EXCELLENT

ADDITIONAL GRADING INFORMATION

Polish EXCELLENT Symmetry EXCELLENT Fluorescence NONE Inscription(s) IGI LG800620154

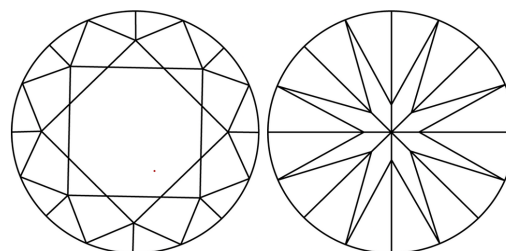
Comments: This Laboratory Grown Diamond was created by Chemical Vapor Deposition (CVD) growth process. Type IIa

PROPORTIONS



Sample Image Used

CLARITY CHARACTERISTICS



KEY TO SYMBOLS

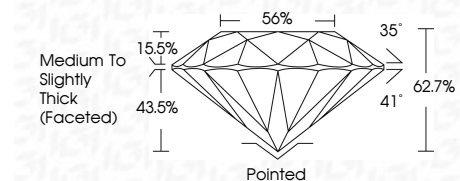
Red symbols indicate internal characteristics. Green symbols indicate external characteristics.

COLOR

D E F G H I J Faint Very Light Light

CLARITY

FL IF VVS 1-2 VS 1-2 SI 1-2 I 1-3 Flawless Internally Flawless Very Very Slightly Included Very Slightly Included Slightly Included Included



ADDITIONAL GRADING INFORMATION

Polish EXCELLENT Symmetry EXCELLENT Fluorescence NONE Inscription(s) IGI LG800620154 Comments: This Laboratory Grown Diamond was created by Chemical Vapor Deposition (CVD) growth process. Type IIa



June 8, 2026 IGI Report No LG800620154 ROUND BRILLIANT 8.08 - 8.12 X 5.08 MM 2.05 CARATS E VVS 2 EXCELLENT 62.7% 56% Medium To Slightly Thick (Faceted) Pointed EXCELLENT EXCELLENT NONE IGI LG800620154 Comments: This Laboratory Grown Diamond was created by Chemical Vapor Deposition (CVD) growth process. Type IIa