



ELECTRONIC COPY

LG800620002
Report verification at igi.org



June 8, 2026
IGI Report Number **LG800620002**
Description **LABORATORY GROWN DIAMOND**
Shape and Cutting Style **CUSHION MODIFIED BRILLIANT**
Measurements **9.80 X 6.48 X 4.57 MM**
GRADING RESULTS
Carat Weight **2.52 CARATS**
Color Grade **FANCY INTENSE PINK**
Clarity Grade **VS 1**

LABORATORY GROWN DIAMOND REPORT

June 8, 2026
IGI Report Number **LG800620002**
Description **LABORATORY GROWN DIAMOND**
Shape and Cutting Style **CUSHION MODIFIED BRILLIANT**
Measurements **9.80 X 6.48 X 4.57 MM**

GRADING RESULTS

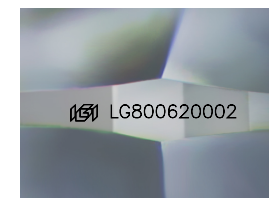
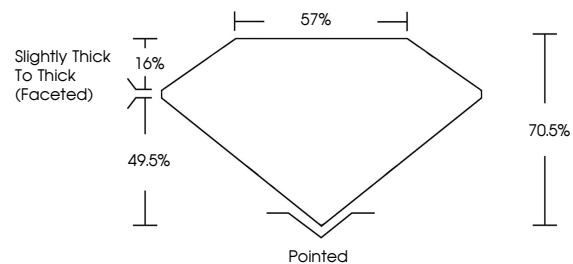
Carat Weight **2.52 CARATS**
Color Grade **FANCY INTENSE PINK**
Clarity Grade **VS 1**

ADDITIONAL GRADING INFORMATION

Polish **EXCELLENT**
Symmetry **EXCELLENT**
Fluorescence **SLIGHT**
Inscription(s) **IGI LG800620002**

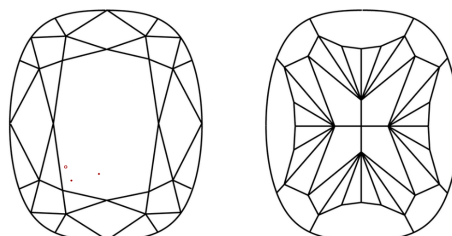
Comments: This Laboratory Grown Diamond was created by Chemical Vapor Deposition (CVD) growth process.
Indications of post-growth treatment.

PROPORTIONS



Sample Image Used

CLARITY CHARACTERISTICS



KEY TO SYMBOLS

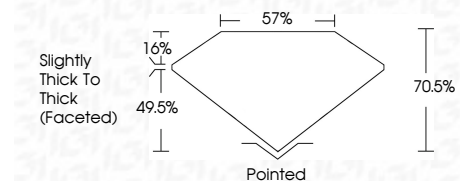
Red symbols indicate internal characteristics.
Green symbols indicate external characteristics.

COLOR

D E F G H I J Faint Very Light Light

CLARITY

FL	IF	VS ¹⁻²	VS ¹⁻²	SI ¹⁻²	I ¹⁻³
Flawless	Internally Flawless	Very Very Slightly Included	Very Slightly Included	Slightly Included	Included



ADDITIONAL GRADING INFORMATION

Polish **EXCELLENT**
Symmetry **EXCELLENT**
Fluorescence **SLIGHT**
Inscription(s) **IGI LG800620002**
Comments: This Laboratory Grown Diamond was created by Chemical Vapor Deposition (CVD) growth process.
Indications of post-growth treatment.



June 8, 2026
IGI Report No **LG800620002**
CUSHION MODIFIED BRILLIANT
9.80 X 6.48 X 4.57 MM
Carat Weight **2.52 CARATS**
Color Grade **FANCY INTENSE PINK**
Clarity Grade **VS 1**
Depth **70.5%**
Table **57%**
Girdle **Slightly Thick To Thick (Faceted)**
Culet **Pointed**
Polish **EXCELLENT**
Symmetry **EXCELLENT**
Fluorescence **SLIGHT**
Inscription(s) **IGI LG800620002**
Comments: This Laboratory Grown Diamond was created by Chemical Vapor Deposition (CVD) growth process.
Indications of post-growth treatment.