



ELECTRONIC COPY

LG800619995
Report verification at igi.org



June 8, 2026

IGI Report Number **LG800619995**

Description **LABORATORY GROWN DIAMOND**

Shape and Cutting Style **HEART MODIFIED BRILLIANT**

Measurements **6.57 X 7.01 X 3.91 MM**

GRADING RESULTS

Carat Weight **1.29 CARAT**

Color Grade **FANCY INTENSE PINK**

Clarity Grade **VS 1**

June 8, 2026

IGI Report Number **LG800619995**

Description **LABORATORY GROWN DIAMOND**

Shape and Cutting Style **HEART MODIFIED BRILLIANT**

Measurements **6.57 X 7.01 X 3.91 MM**

GRADING RESULTS

Carat Weight **1.29 CARAT**

Color Grade **FANCY INTENSE PINK**

Clarity Grade **VS 1**

ADDITIONAL GRADING INFORMATION

Polish **VERY GOOD**

Symmetry **EXCELLENT**

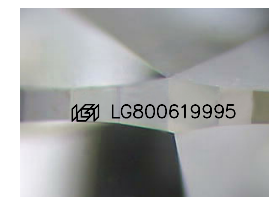
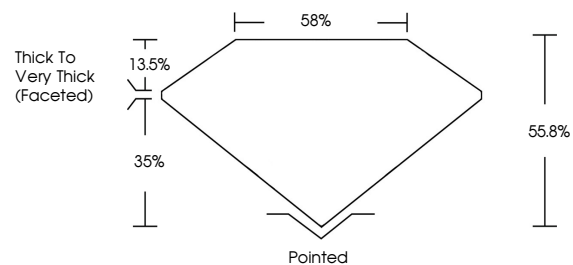
Fluorescence **SLIGHT**

Inscription(s) **LG800619995**

Comments: This Laboratory Grown Diamond was created by Chemical Vapor Deposition (CVD) growth process.

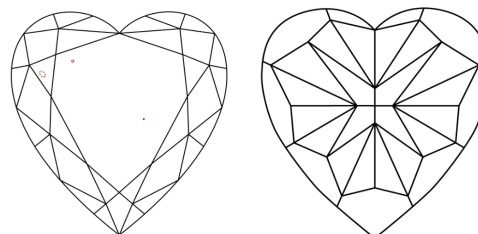
Indications of post-growth treatment.

PROPORTIONS



Sample Image Used

CLARITY CHARACTERISTICS



KEY TO SYMBOLS

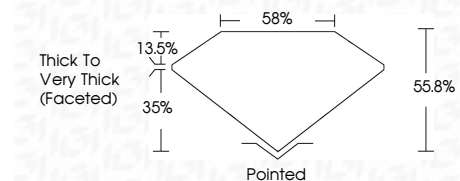
Red symbols indicate internal characteristics.
Green symbols indicate external characteristics.

COLOR

D E F G H I J Faint Very Light Light

CLARITY

FL	IF	VS ¹⁻²	VS ¹⁻²	SI ¹⁻²	I ¹⁻³
Flawless	Internally Flawless	Very Very Slightly Included	Very Slightly Included	Slightly Included	Included



ADDITIONAL GRADING INFORMATION

Polish **VERY GOOD**

Symmetry **EXCELLENT**

Fluorescence **SLIGHT**

Inscription(s) **LG800619995**

Comments: This Laboratory Grown Diamond was created by Chemical Vapor Deposition (CVD) growth process. Indications of post-growth treatment.



June 8, 2026
IGI Report No **LG800619995**
HEART MODIFIED BRILLIANT
6.57 X 7.01 X 3.91 MM
1.29 CARAT
FANCY INTENSE PINK
VS 1
65.6%
35%
Thick to Very Thick (Faceted)
Pointed
VERY GOOD
EXCELLENT
SLIGHT
IGI LG800619995

Comments: This Laboratory Grown Diamond was created by Chemical Vapor Deposition (CVD) growth process. Indications of post-growth treatment.