



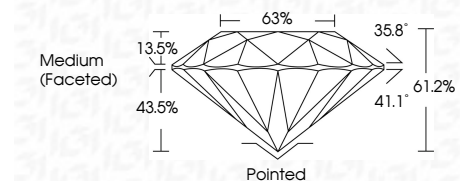
ELECTRONIC COPY

LG800619502 Report verification at igi.org



June 8, 2026 IGI Report Number LG800619502 Description LABORATORY GROWN DIAMOND Shape and Cutting Style ROUND BRILLIANT Measurements 9.16 - 9.22 X 5.63 MM

GRADING RESULTS Carat Weight 2.98 CARATS Color Grade E Clarity Grade VS 1 Cut Grade EXCELLENT



ADDITIONAL GRADING INFORMATION Polish EXCELLENT Symmetry EXCELLENT Fluorescence NONE Inscription(s) LG800619502 Comments: This Laboratory Grown Diamond was created by Chemical Vapor Deposition (CVD) growth process. Type IIa



June 8, 2026 IGI Report No LG800619502 ROUND BRILLIANT 9.16 - 9.22 X 5.63 MM 2.98 CARATS E VS 1 EXCELLENT 61.2% 63% Medium (Faceted) Pointed EXCELLENT EXCELLENT NONE NONE LG800619502

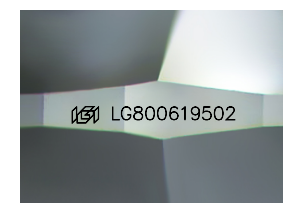
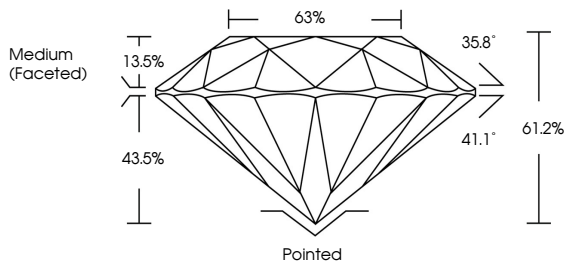
June 8, 2026 IGI Report Number LG800619502 Description LABORATORY GROWN DIAMOND Shape and Cutting Style ROUND BRILLIANT Measurements 9.16 - 9.22 X 5.63 MM

GRADING RESULTS Carat Weight 2.98 CARATS Color Grade E Clarity Grade VS 1 Cut Grade EXCELLENT

ADDITIONAL GRADING INFORMATION Polish EXCELLENT Symmetry EXCELLENT Fluorescence NONE Inscription(s) LG800619502

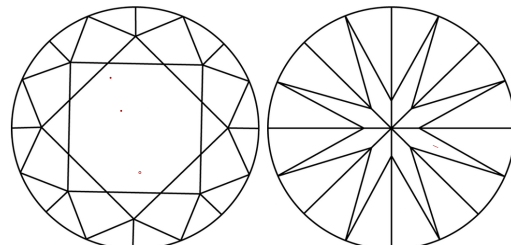
Comments: This Laboratory Grown Diamond was created by Chemical Vapor Deposition (CVD) growth process. Type IIa

PROPORTIONS



Sample Image Used

CLARITY CHARACTERISTICS



KEY TO SYMBOLS Red symbols indicate internal characteristics. Green symbols indicate external characteristics.

Table with columns D, E, F, G, H, I, J, Faint, Very Light, Light

Table with columns FL, IF, VS 1-2, VS 1-2, SI 1-2, I 1-3 and corresponding descriptions: Flawless, Internally Flawless, Very Very Slightly Included, Very Slightly Included, Slightly Included, Included

