



ELECTRONIC COPY

LG800619455
Report verification at igi.org



June 8, 2026
IGI Report Number **LG800619455**
Description **LABORATORY GROWN DIAMOND**
Shape and Cutting Style **SQUARE CUSHION MODIFIED BRILLIANT**
Measurements **6.89 X 6.76 X 4.58 MM**
GRADING RESULTS
Carat Weight **2.03 CARATS**
Color Grade **FANCY GRAYISH BLUE**
Clarity Grade **VS 1**

LABORATORY GROWN DIAMOND REPORT

June 8, 2026
IGI Report Number **LG800619455**
Description **LABORATORY GROWN DIAMOND**
Shape and Cutting Style **SQUARE CUSHION MODIFIED BRILLIANT**
Measurements **6.89 X 6.76 X 4.58 MM**

GRADING RESULTS

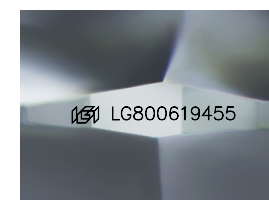
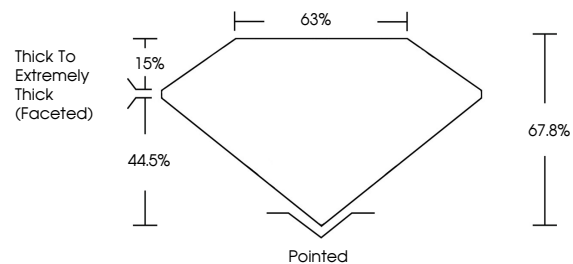
Carat Weight **2.03 CARATS**
Color Grade **FANCY GRAYISH BLUE**
Clarity Grade **VS 1**

ADDITIONAL GRADING INFORMATION

Polish **EXCELLENT**
Symmetry **VERY GOOD**
Fluorescence **NONE**
Inscription(s) **IGI LG800619455**

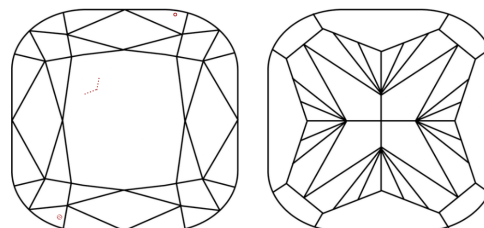
Comments: This Laboratory Grown Diamond was created by Chemical Vapor Deposition (CVD) growth process.
Indications of post-growth treatment.

PROPORTIONS



Sample Image Used

CLARITY CHARACTERISTICS



KEY TO SYMBOLS

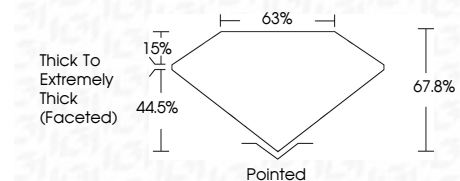
Red symbols indicate internal characteristics.
Green symbols indicate external characteristics.

COLOR

D E F G H I J Faint Very Light Light

CLARITY

FL	IF	VS ¹⁻²	VS ¹⁻²	SI ¹⁻²	I ¹⁻³
Flawless	Internally Flawless	Very Very Slightly Included	Very Slightly Included	Slightly Included	Included



ADDITIONAL GRADING INFORMATION

Polish **EXCELLENT**
Symmetry **VERY GOOD**
Fluorescence **NONE**
Inscription(s) **IGI LG800619455**
Comments: This Laboratory Grown Diamond was created by Chemical Vapor Deposition (CVD) growth process.
Indications of post-growth treatment.



June 8, 2026
IGI Report No. LG800619455
SQUARE CUSHION MODIFIED BRILLIANT
6.89 X 6.76 X 4.58 MM
2.03 CARATS
FANCY GRAYISH BLUE
VS 1
67.8%
63%
Thick To Extremely Thick (Faceted)
Pointed
EXCELLENT
VERY GOOD
NONE
IGI LG800619455
Comments: This Laboratory Grown Diamond was created by Chemical Vapor Deposition (CVD) growth process.
Indications of post-growth treatment.