



ELECTRONIC COPY

LG800618979
Report verification at igi.org



June 8, 2026

IGI Report Number **LG800618979**

Description **LABORATORY GROWN DIAMOND**

Shape and Cutting Style **OVAL BRILLIANT**

Measurements **18.45 X 11.59 X 6.98 MM**

GRADING RESULTS

Carat Weight **9.58 CARATS**

Color Grade **E**

Clarity Grade **VVS 2**

LABORATORY GROWN DIAMOND REPORT

June 8, 2026

IGI Report Number **LG800618979**

Description **LABORATORY GROWN DIAMOND**

Shape and Cutting Style **OVAL BRILLIANT**

Measurements **18.45 X 11.59 X 6.98 MM**

GRADING RESULTS

Carat Weight **9.58 CARATS**

Color Grade **E**

Clarity Grade **VVS 2**

ADDITIONAL GRADING INFORMATION

Polish **EXCELLENT**

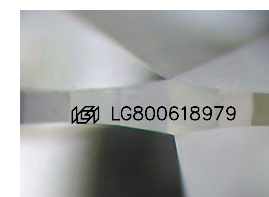
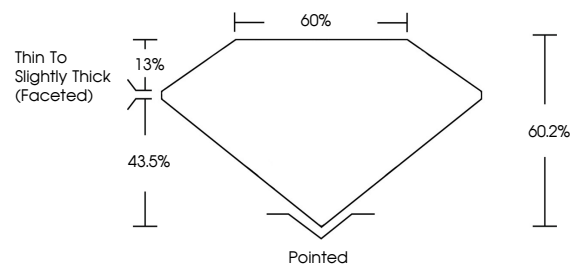
Symmetry **EXCELLENT**

Fluorescence **NONE**

Inscription(s) **IGI LG800618979**

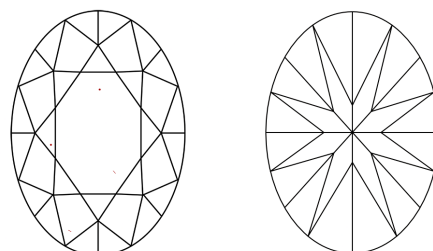
Comments: This Laboratory Grown Diamond was created by Chemical Vapor Deposition (CVD) growth process. Type IIa

PROPORTIONS



Sample Image Used

CLARITY CHARACTERISTICS



KEY TO SYMBOLS

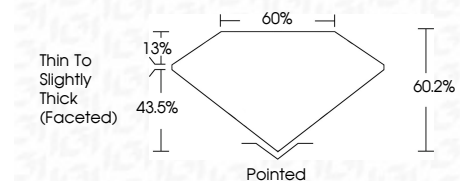
Red symbols indicate internal characteristics.
Green symbols indicate external characteristics.

COLOR

D E F G H I J Faint Very Light Light

CLARITY

FL	IF	VVS ¹⁻²	VS ¹⁻²	SI ¹⁻²	I ¹⁻³
Flawless	Internally Flawless	Very Very Slightly Included	Very Slightly Included	Slightly Included	Included



ADDITIONAL GRADING INFORMATION

Polish **EXCELLENT**

Symmetry **EXCELLENT**

Fluorescence **NONE**

Inscription(s) **IGI LG800618979**

Comments: This Laboratory Grown Diamond was created by Chemical Vapor Deposition (CVD) growth process. Type IIa



June 8, 2026
IGI Report No LG800618979
OVAL BRILLIANT
18.45 X 11.59 X 6.98 MM
9.58 CARATS
E
VVS 2
60.2%
60%
Thin to Slightly Thick (Faceted)
Pointed
EXCELLENT
EXCELLENT
NONE
IGI LG800618979

Comments: This Laboratory Grown Diamond was created by Chemical Vapor Deposition (CVD) growth process. Type IIa